

PAPER DETAILS

TITLE: Optimum Design of Reinforced Concrete T-Beam Considering Environmental Factors via Flower Pollination Algorithm

AUTHORS: Aylin Ece KAYABEKIR, Gebrail BEKDAS, Sinan Melih NIGDELI

PAGES: 166-178

ORIGINAL PDF URL: <https://dergipark.org.tr/tr/download/article-file/2137407>

Optimum Design of Reinforced Concrete T-Beam Considering Environmental Factors via Flower Pollination Algorithm

Aylin Ece Kayabekir^a, Gebrail Bekdaş^b, Sinan Melih Nigdeli^{c*}

^a Istanbul Gelişim University, Civil Engineering Department, 34310 Avcılar, Istanbul/Tukey
^{b,c} Istanbul University-Cerrahpaşa, Civil Engineering Department, 34320 Avcılar, Istanbul/Tukey
*E-mail address: melihnig@iuc.edu.tr

ORCID numbers of authors:

0000-0003-3592-4564^a, 0000-0002-7327-9810^b, 0000-0002-9517-7313^c

Received date: 17.12.2021

Accepted date: 29.12.2021

Abstract

The minimum cost designs may be costly for the environment. In that case, the cost is not only a single objective in the design of structures. In that situation, CO₂ emission minimization can be considered in the optimum design. In this study, reinforced concrete (RC) T-beams were optimized via flower pollination algorithm for the environmental factor minimizing the CO₂ emission of the materials. The investigation was done for 4 cases of CO₂ emission values and these cases were compared with 5 cases of the cost ratios of concrete and steel. Due to this investigation, it was found that CO₂ emission optimization is effective in the reduction of the CO₂ emission value by 4.5% compared to cost optimization. If the ratios of CO₂ emission and the cost of steel per concrete are different, the optimum design variables and objectives are different. Also, the use of recycled steel is %30.24 more effective on the reduction of CO₂ emission and saving the planet.

Keywords: Metaheuristic; Carbon Minimization; Cost Optimization; Eco-friendly design; Minimum carbon emission.

1. Introduction

Due to a shortage of resources and sustainability, engineering design must be eco-friendly. In structural engineering, choosing eco-friendly or recycled material can play an important role. For the design of steel structures, the eco-friendliest material can be chosen, and it is optimum in minimization of CO₂ emission if it has the same strength as the one with a higher emission value. Also, optimization can be done if the strengths are different for the steel types to find a design that has low CO₂ emissions.

The optimization is more challenging for RC structures. For RC structures, two materials such as concrete and steel are used to provide a design in required ductility. These materials have different costs and different CO₂ emissions. Also, the design is constrained by the factors given in design regulations. These problems can be only optimized via numerical iterations and the best way to apply numerical iteration systematically, effectively, and rapidly is through the usage of metaheuristic methods.



To reach the optimum solution of RC members, various metaheuristic algorithms have been employed. The genetic algorithm that uses the factors such as mutation, crossover, reproduction [1-2] was used in the optimum design of RC beams with rectangular cross-section [3], RC continuous beams [4], RC biaxial columns [5-6], RC frames [6] and RC T-beams [7]. Also, hybrid methods that combines GA with sequential quadratic programming [8], simulating annealing [9-10] and Hook and Jeeves method [11-12] were used to optimize RC members.

Harmony Search (HS) that imitates the musical performances and uses the harmony memory of musicians was also employed in many cost optimization methods for T-beams [13], slender columns [14-15], shear walls [16], frames [17-19] and retaining walls [20-21].

The number of metaheuristic-based cost optimization studies for RC members shows a great increase in the last decade and several examples are as follows.

An artificial bee colony algorithm was employed to optimize RC continuous beams by modifying the algorithm by Jahjouh et al. [22]. Nigdeli et al. [23] proposed a HS-based methodology for bi-axial loading of RC columns. Bat algorithm [24] and teaching-learning-based optimization (TLBO) [25] were employed for the optimum design of RC columns. Swarm intelligence was also used in the optimum design of RC members by Esfandiary et al. [26] and Chutani and Singh [27]. Kayabekir et al. employed the single-phase and parameter-free Jaya algorithm (JA) to optimize T-beams [28]. Also, Kayabekir et al. [29] evaluated four metaheuristics including HS, TLBO, JA, and Flower pollination algorithm (FPA) for the optimum design of RC T-beams, and Kayabekir and Nigdeli [30] statistically compared these algorithms according to methods such as one-way ANOVA, independent samples t-test, Friedman ranking, post-hoc Bonferroni test. By employing FPA, RC footings [31], RC cantilever retaining walls [32], and 3D RC frames [33] were optimized.

Generally, the objective function is the cost minimization, but optimization studies related with CO₂ emission minimization have been conducted. These studies include optimization of RC frames via simulated annealing [34], RC columns via GA [35], RC frames via big-bang big crunch algorithm (BB-BC) [36], precast-prestressed concrete U beam road bridges via hybrid glowworm swarm algorithm [37], post-tensioned concrete box-girders via HS [38], RC footings via BB-BC [39], RC cantilever solid piles via HS [40], RC retaining walls via HS [41], and concrete-filled steel tubular columns via spider and HS algorithms [43-43].

In the present study, the T-beam optimization is presented via FPA for CO₂ minimization. The results were compared with cost optimization results ad multiple cases of cost ad CO₂ ratios steel and concrete is investigated.

2. Flower Pollination Algorithm Optimization Procedure

The principles of the flower pollination algorithm optimization process were first introduced by Xin-She Yang in 2012 [44]. In this algorithm, Yang expressed his observations of the pollination characteristics of flowering plants with mathematical equations and then developed an algorithm including these equations to perform the optimum search process.

According to this; similar to the pollination process inspired by the algorithm, two different processes called global and local pollination are applied probabilistically in the optimization process. Global pollination is the pollination process of flowers through a carrier (such as wind, and various living things), and it is expressed in the algorithm as follows.

$$x_i^{t+1} = x_i^t + r1 \cdot (x_b^t - x_i^t) \tag{1}$$

Local pollination, on the other hand, refers to the pollination process carried out by the flower itself and was expressed by Yang as follows.

$$x_i^{t+1} = x_i^t + r2 \cdot (x_j^t - x_k^t) \tag{2}$$

In the equations, x_i^{t+1} is the new solution generated from the x_i^t solution, x_b^t is the best existing solution, x_j^t and x_k^t are two randomly selected solutions from the exiting solutions, r1 is the levy flight and r2 is a randomly generated decimal number between 0 and 1.

The application of the equations for optimum design of the reinforced concrete T-beam (Fig. 1) and processes of FPA can be summarized in five steps. The flowchart of the optimization is given as Fig. 2.

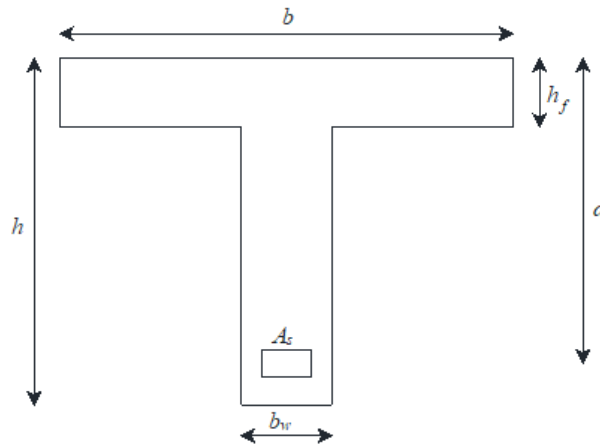


Fig. 1. Cross-section of T-shaped beam [29]

The first step is the stage where the problem is defined. At this stage, the data defined for the problem are the design constants, the lower and upper limits of the design variables, the FPA algorithm parameters, the number of solution vectors (pn), the switch probability (sp), and the maximum number of iterations as the stopping criterion. The definitions of design constants and variables and their values used in the numerical example are taken from Fedghouche and Tiliouine [7] and presented in Tables 1 and 2, respectively. The Eurocode 2 [45] regulation and the technical constraints that the section must provide are defined in Table 3.

Table 1. The design constants

Symbol	Definition	Value
f_{ck}	Characteristic compressive strength for concrete	20 MPa
f_{cd}	Allowable compressive strength for concrete	11.33 MPa
f_{yd}	Characteristic yield strength of reinforcement	348 MPa
ρ_{max}	The maximum reinforcement ratio	0.04
ρ_{min}	The minimum reinforcement ratio	0.0013
L	The length of the beam	20 m
E_s	Young's elastic modules for steel	200000 MPa
M_{Ed}	The ultimate bending moment capacity	4.991 N.m

V_{Ed}	The ultimate bending moment capacity	1.039 N
C_s / C_c	The ratio for unit steel and concrete costs	5, 10, 20, 30, 36
$C_{s,co2} / C_{c,co2}$	The ratio for unit steel and concrete costs	0.95, 10, 15, 20

In the second step, the initial solution matrix is constructed. The design variables are generated randomly within the minimum ($x_{i,min}$) and maximum ($x_{i,max}$) ranges defined in the first step and recorded in this matrix (Eq. (3)).

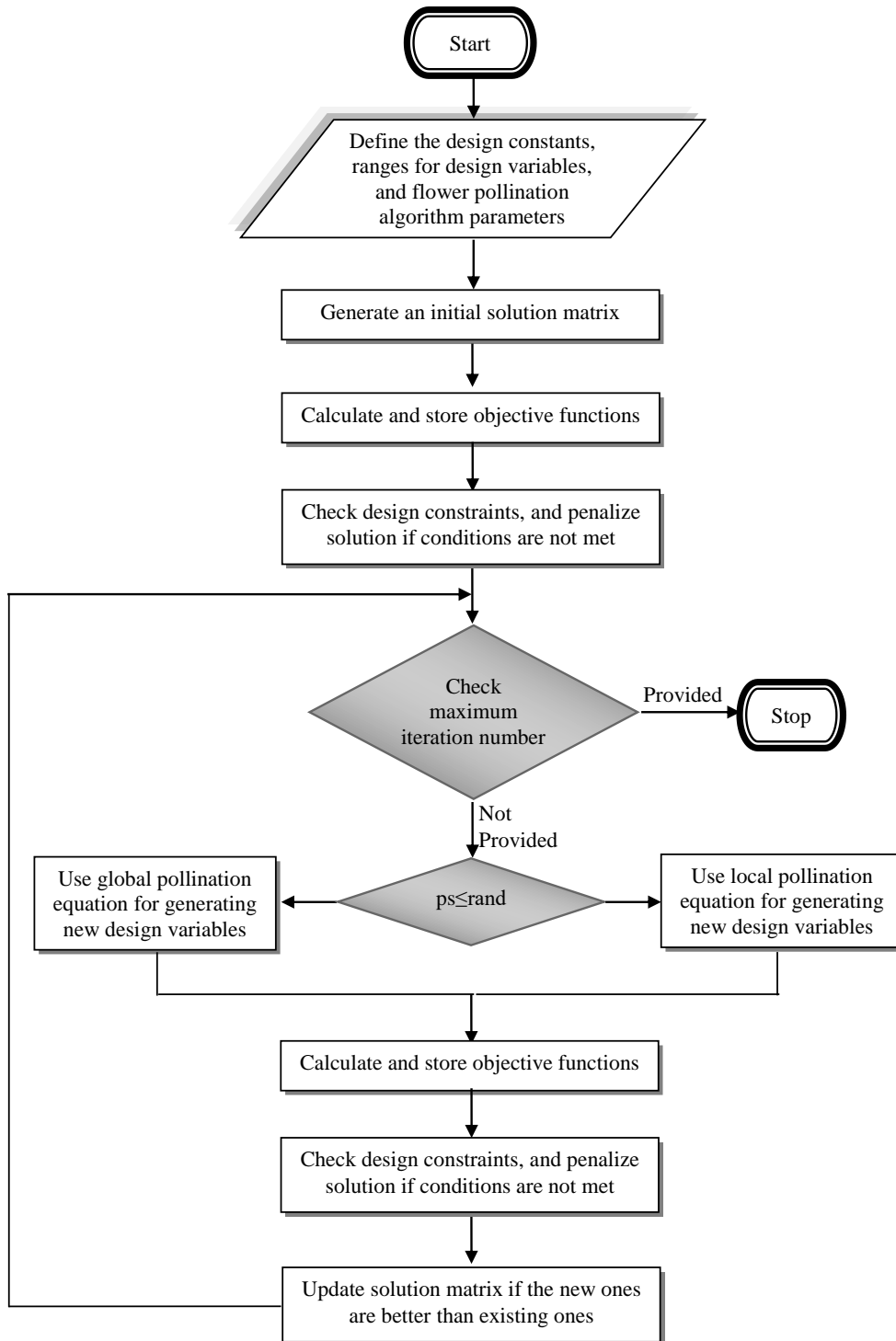


Fig. 2. Flowchart of the optimization process

$$x_i = x_{i,min} + r3 \cdot (x_{i,max} - x_{i,min}) \quad (3)$$

Table 2. Ranges of design variables

Symbol	Definition	Minimum	Maximum
b	Effective width of compressive flange [mm]	b_w	$\min [0.2L + b_w, 8h_f]$
b_w	Web width [mm]	$0.2d$	$0.4d$
h	Height [mm]	$L/16$	2.0
h_f	Flange depth [mm]	0.15	d
d	Effective depth [mm]	$0.9h$	
d_s	Cover of reinforcements [mm]	$0.1h$	
A_s	Area of reinforcing steel [mm ²]	0	0.1

Table 3. The design constraints

$$\omega(1 - 0.5\omega) \leq 0.392$$

$$0.0035(0.8 - \omega)/\omega \geq f_{yd}/E_s$$

$$\rho_{min} \leq \rho \leq \rho_{max}$$

$$M_{Ed} \leq M_{Ed1}$$

$$V_{Ed} \leq V_{Rd max}$$

After the design variables are determined, beam reinforced concrete designs are performed for each solution (from first to pn number of solutions) in the initial solution matrix. The reinforced concrete design must satisfy the Eurocode 2 [45] regulation constraints presented in Table 3 calculated based on Eqs. (4)-(9) for the situation without shear reinforcement optimization as presented in Fedghouche and Tiliouine [7].

$$\omega = (f_{yd}/f_{cd})(A_s/b_w d) - (b - b_w)h_f/(b_w d) \quad (4)$$

$$\rho = A_s/(b_w d) \quad (5)$$

$$M_{Ed1} = f_{cd}(b - b_w)h_f(d - 0.50h_f) + f_{cd}b_w d^2 \omega(1 - 0.5\omega) \quad (6)$$

$$V_{Rd max} = v_1 f_{cd} b_w z / (\tan(45) + \cot(45)) \quad (7)$$

$$v_1 = 0.6(1 - f_{ck}/250) \quad (8)$$

$$z = 0.9d \quad (9)$$

Finally, in this step, the total CO₂ emission value for each beam design is calculated and stored as the corresponding solution. This expression is the objective function of the optimization problem. If constraints are provided in the design, the solution is evaluated by subjecting the objective function of the design to a process called penalty. In the literature, various penalty

methods are depending on the problem. In this study, equating the objective function to a high value (10^6) was applied.

$$f_{co2}(x) = C_{c,co2}b_wd + C_{c,co2}(b - b_w)h_f + (C_{s,co2}/C_{c,co2})A_s \quad (10)$$

For the compared cases for cost optimization, the objective function as the total beam cost is shown in Eq. (11).

$$f_{cost}(x) = C_c b_w d + C_c (b - b_w) h_f + (C_s / C_c) A_s \quad (11)$$

In the third step, the new solutions are derived. According to the algorithm rules, one of the global (Eq. (1)) or local (Eq. (2)) pollination equations is used to generate a new solution. The value of switch probability (sp) is used for the global and local pollination probabilistic selection. According to this; if the randomly generated number between 0 and 1 is less than the sp value, new solutions are generated according to global pollination, otherwise, local pollination rules are applied.

In the fourth step, old and new solutions are compared. The objective functions of each solution are compared, in case the new solution is better (the objective function is lower), the existing solution is deleted and the values of the new solution are saved instead. Otherwise, the existing solution is preserved.

In the last step, the stopping criterion is checked. New solution generation and comparison processes (steps 3 and 4) are repeated until the criterion is determined in the first step as the maximum number of iterations are met.

3. Numerical Examples

For the T-beam given in Figure 1, the analysis was carried out by the numerical values of the design constants, design constraints, and design variable limits given in Section 2. Analysis with the objective function of the total beam cost was also performed simultaneously to compare with the optimization results for CO₂ emission.

As it is known, unit costs of concrete and steel vary in different parts of the world. To take this situation into account, 5 different steel and concrete unit cost ratios were taken into account in the analysis. Information on these cases is presented in Table 4.

Table 4. Cases for Cost optimization

Case No	1	2	3	4	5
C_s / C_c	36	30	20	10	5

A similar situation is seen in unit carbon emission rates. In addition to many factors such as the materials and additive rates in the concrete content and the production method, the recycled material content of the steel, even the region where the materials are produced affects the unit carbon emission rates of these materials. To take these variations into account, studies in the literature were examined and carbon emission ratios were determined for four different steel and concrete units [34, 46]. The carbon emission rates in question are shown in Table 5. Case 6 shows the value for the use of recycled steel.

Table 5. Cases for CO₂ optimization

Case No	6	7	8	9
$C_{s,co2} / C_{c,co2}$	0.95	10	15	20

The optimum results for these cases are given in Tables 6 and 7. In addition to the optimum results of the design variables, the carbon emission and total cost values for the relevant cases are presented in the tables to examine the cost-carbon emission relationship.

Table 6. Optimum results for cost optimization

Design variables	Case 1	Case 2	Case 3	Case 4	Case 5
b (m)	1.137640	1.155663	1.229911	1.330057	1.378292
b _w (m)	0.304351	0.298164	0.291116	0.278516	0.272245
h (m)	1.690838	1.656469	1.617309	1.547309	1.512473
d (m)	1.521755	1.490822	1.455578	1.392578	1.361225
h _f (m)	0.150000	0.150000	0.153739	0.166323	0.172287
A _s (m ²)	0.011414	0.011870	0.012071	0.012442	0.012651
ω	0.487053	0.530813	0.534350	0.534348	0.534351
$f_{cost}(x)$	0.999034	0.929226	0.809488	0.687166	0.624400
$C_{s,co2} / C_{c,co2}=0.95$	0.598984	0.584411	0.579538	0.574569	0.573162
$C_{s,co2} / C_{c,co2}=10$	0.702278	0.691832	0.688780	0.687166	0.687656
$C_{s,co2} / C_{c,co2}=15$	0.759346	0.751180	0.749134	0.749375	0.750912
$C_{s,co2} / C_{c,co2}=20$	0.827828	0.822398	0.821559	0.824025	0.826819

Table7. Optimum results for CO₂ optimization

Design variables	Case 6	Case 7	Case 8	Case 9
b (m)	1.382218	1.327519	1.278476	1.217860
b _w (m)	0.271727	0.278872	0.285113	0.292575
h (m)	1.509592	1.549286	1.583961	1.625415
d (m)	1.358633	1.394358	1.425565	1.462873
h _f (m)	0.172777	0.165940	0.159810	0.152232
A _s (m ²)	0.012669	0.012430	0.012239	0.012032
ω	0.534351	0.534351	0.534345	0.534351
$f_{co2}(x)$	0.573080	0.687161	0.748787	0.821529
$C_s / C_c=5$	0.624391	0.625010	0.626393	0.629018
$C_s / C_c=10$	0.687737	0.687161	0.687590	0.689178
$C_s / C_c=20$	0.814431	0.811463	0.809984	0.809497

$C_s / C_c=30$	0.941124	0.935765	0.932378	0.929817
$C_s / C_c=36$	1.01714	1.010347	1.005815	1.002009

4. Discussion of The Results

As seen in Fig. 3, by the increase of the cost of steel bars concerning the cost of concrete, the cross-section dimensions are increasing in size for b_w , h_f , and d . In that case, the area of rebar is approximately reduced by 1 dm^2 . The increase in the flange of the beam also results in the increase of rebar for equilibrium. In that case, h is optimally chosen to be increased to reduce the amount of rebar that has a high cost. The optimization methodology can decide it and it shows a relationship with the theory of RC design.

As seen from Fig. 3, the reduction of cost ratio of steel per column reduces the total optimum cost. For Case 1 to 5, a significant difference for CO_2 emission is not seen if $C_{s,\text{co}2} / C_{c,\text{co}2}$ is bigger than 10, but the CO_2 emission for Case 5 is 4.5% better than Case 1 if $C_{s,\text{co}2} / C_{c,\text{co}2}=0.95$.

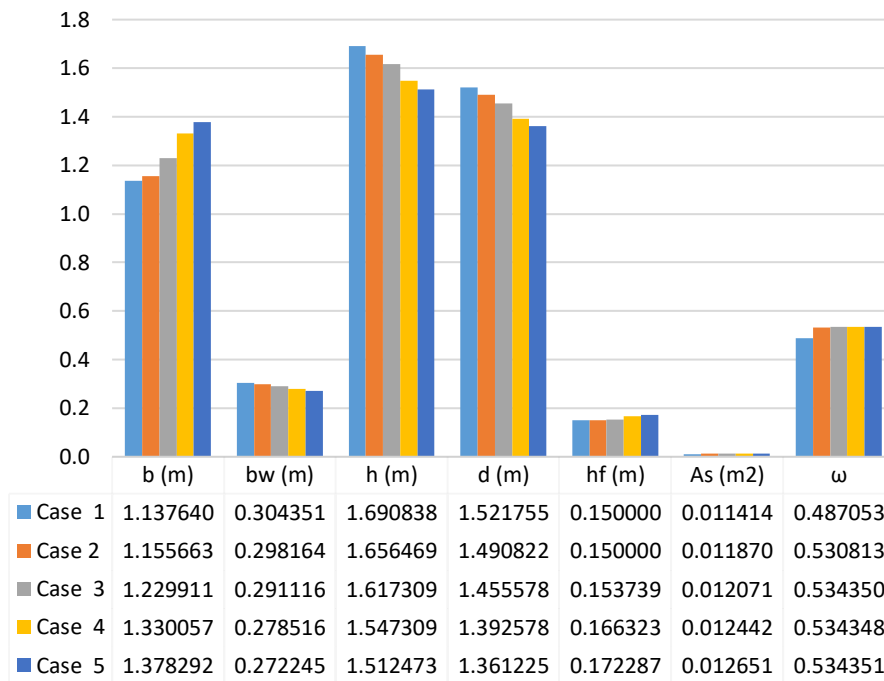


Fig. 3. Design variables for the cost optimization

As seen in Fig. 5, the increase of $C_{s,\text{co}2} / C_{c,\text{co}2}$ shows the same increases and decreases as cost optimization for the cross-section dimensions. Fig. 6 shows the CO_2 emission and cost concerning different cost ratios. In CO_2 minimization, it is possible to find solutions with lower CO_2 emissions than the results found via cost optimization. For cost optimization results of Case 5, the gap between CO_2 values for cost and CO_2 optimization closes.

In CO_2 optimization, Case 6 has a marginal $C_{s,\text{co}2} / C_{c,\text{co}2}$ ratio that can reflect a case of using recycled steel. In this case, the dimensions of b and h_f are the biggest compared to all cases. In Case 9, the costs are close to cost optimization results. This proves that cost and CO_2

optimization may have very different optimum results if $C_{s,co2}/C_{c,co2}$, and C_s/C_c are different. The use of recycled steel is 30.24% more eco-friendly comparing to Case 9.

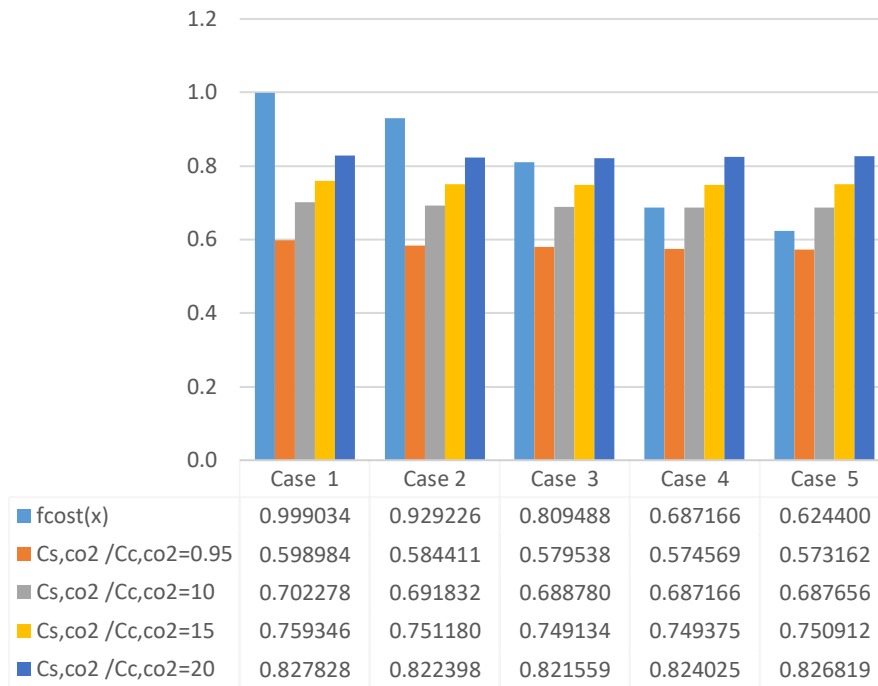


Fig. 4. Objective functions for cost optimization

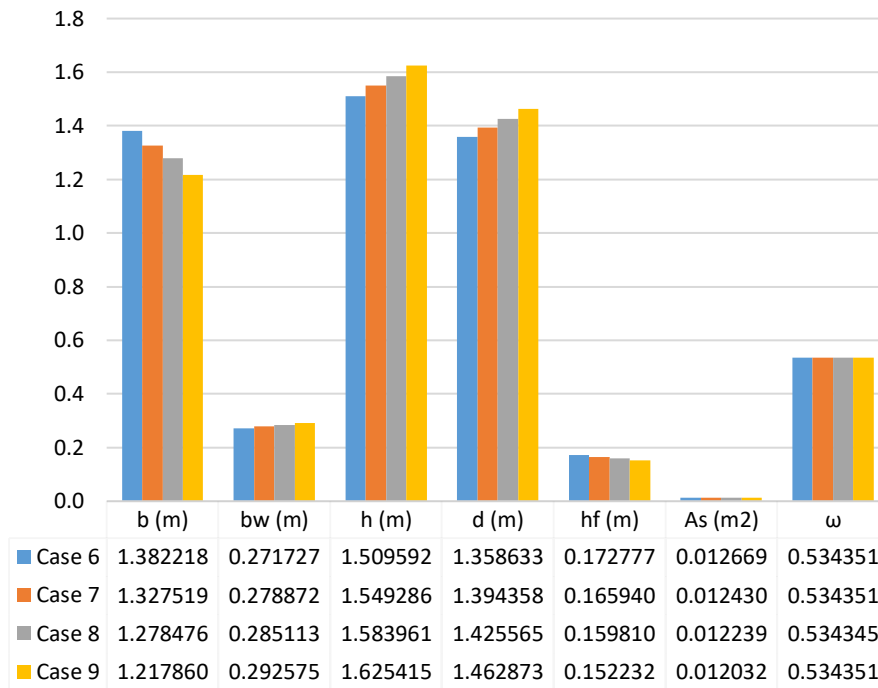


Fig. 5. Design variables for the CO₂ optimization

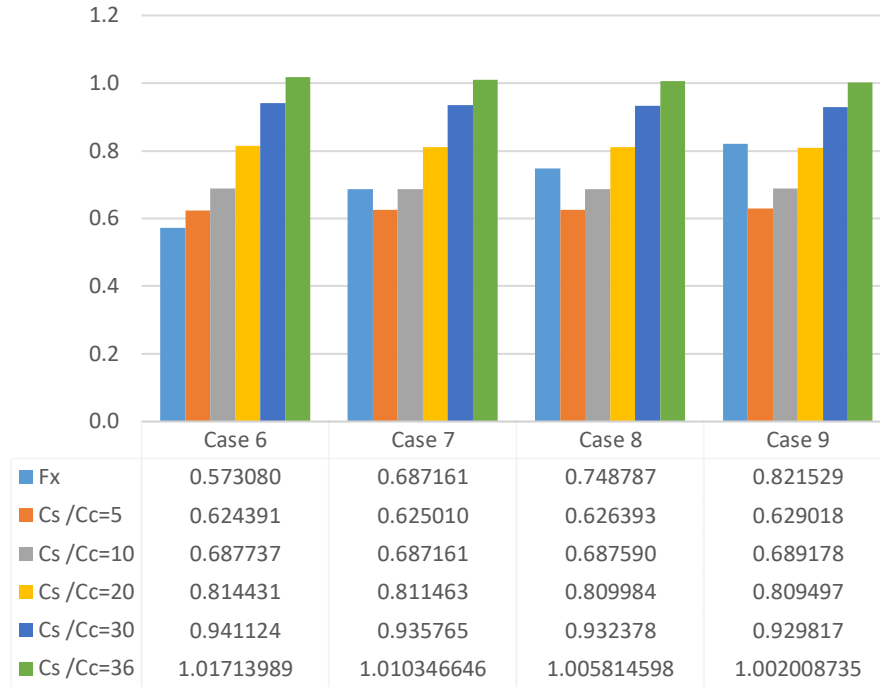


Fig. 6. Objective functions for the CO₂ optimization

5. Conclusion

In the present paper, an optimization methodology for the CO₂ emission minimization of T-beams is presented. To find out the differences between CO₂ and cost optimization, both objectives are calculated for multiple cases of cost and CO₂ emission ratios of steel and concrete. According to the results, the cross-section dimensions and steel reinforcement area shows great differences for these ratios. For both increases of cost and CO₂ emission of steel, the optimum design tends to be minimum in reinforcement area and maximum in the moment arm value by increasing the height and directly increasing the depth of T-beam.

Since the cost and CO₂ objectives are similar in form with the only difference in cost and CO₂ values of the materials, the behavior is the same in CO₂ and cost optimization. Due to that, the difference in CO₂ values for cost and CO₂ optimization are close if cost and CO₂ ratios of steel per concrete are similar as seen from the results of Case 3 and Case 9 or Case 4 and Case 7. This is not acceptable for Case 6 where recycled steel bars are used. This case has 4.5% reduced CO₂ emission concerning cost optimization and 30.24% reduced CO₂ emission compared to Case 9.

As the final remarks, CO₂ optimization may have different optimum results if C_s/C_c and $C_{s,co2}/C_{c,co2}$ are different. Also, recycled steel is very useful in the protection of the earth by conducting an optimum design.

References

- [1] Goldberg, D.E.: Genetic algorithms in search, Optimization and machine learning. Boston MA: Addison Wesley, 1989.

- [2] Holland, J.H.: *Adaptation in Natural and Artificial Systems*. Ann Arbor MI: University of Michigan Press, 1975.
- [3] Coello, C. C., Hernández, F. S., Farrera, F. A., Optimal design of reinforced concrete beams using genetic algorithms. *Expert systems with Applications*, 12(1), 101-108, 1997.
- [4] Koumousis, V. K., & Arsenis, S. J., Genetic algorithms in optimal detailed design of reinforced concrete members. *Computer-Aided Civil and Infrastructure Engineering*, 13(1), 43-52, 1998.
- [5] Rafiq, M. Y., & Southcombe, C., Genetic algorithms in optimal design and detailing of reinforced concrete biaxial columns supported by a declarative approach for capacity checking. *Computers & Structures*, 69(4), 443-457, 1998.
- [6] Camp, C. V., Pezeshk, S., & Hansson, H., Flexural design of reinforced concrete frames using a genetic algorithm. *Journal of Structural Engineering*, 129(1), 105-115, 2003.
- [7] Fedghouche, F., & Tiliouine, B., Minimum cost design of reinforced concrete T-beams at ultimate loads using Eurocode2. *Engineering Structures*, 42, 43-50, 2012
- [8] Rath, D. P., Ahlawat, A. S., & Ramaswamy, A., Shape optimization of RC flexural members. *Journal of Structural Engineering*, 125(12), 1439-1446, 1999.
- [9] Govindaraj, V., & Ramasamy, J. V., Optimum detailed design of reinforced concrete continuous beams using genetic algorithms. *Computers & structures*, 84(1-2), 34-48, 2005.
- [10] Lepš, M., & Šejnoha, M., New approach to optimization of reinforced concrete beams. *Computers & structures*, 81(18-19), 1957-1966, 2003.
- [11] Sahab, M. G., Ashour, A. F., & Toropov, V. V., A hybrid genetic algorithm for reinforced concrete flat slab buildings. *Computers & structures*, 83(8-9), 551-559, 2005.
- [12] Sahab, M. G., Ashour, A. F., & Toropov, V. V., Cost optimisation of reinforced concrete flat slab buildings. *Engineering Structures*, 27(3), 313-322, 2005.
- [13] Bekdaş, G., & Nigdeli, S. M., Optimization of T-shaped RC flexural members for different compressive strengths of concrete. *International Journal of Mechanics*, 7, 109-119, 2013.
- [14] Bekdas, G., & Nigdeli, S. M., The optimization of slender reinforced concrete columns. *PAMM*, 14(1), 183-184, 2014.
- [15] Bekdaş G., & Nigdeli S.M., The Effect of Eccentricity for Optimum Compressively Loaded Reinforced Concrete Column. In *15th EU/ME Workshop: Metaheuristic and Engineering*, Istanbul, Turkey, 2014.
- [16] Nigdeli S.M., & Bekdaş G., Optimization of reinforced concrete shear walls using harmony search. In *11th International Congress on Advances in Civil Engineering*, Istanbul, Turkey, 2014.
- [17] Akin, A., & Saka, M. P., Harmony search algorithm based optimum detailed design of reinforced concrete plane frames subject to ACI 318-05 provisions. *Computers & Structures*, 147, 79-95, 2015.
- [18] Bekdaş G., & Nigdeli S.M., Optimization of RC Frame Structures Subjected to Static Loading. *11th. World Congress on Computational Mechanics*, Barcelona, Spain, 2014.

- [19] Ulusoy S., Kayabekir A.E., Bekdaş G., & Nigdeli S.M., Optimum Design of Reinforced Concrete Multi-Story Multi-Span Frame Structures under Static Loads. In 8th International Conference on Environment Science and Engineering (ICESE 2018), Barcelona, Spain, 2018.
- [20] Akin, A. & Saka, M.P., Optimum Detailed Design of Reinforced Concrete Continuous Beams using the Harmony Search Algorithm, In The Tenth International Conference on Computational Structures Technology, Paper 131, Stirlingshire, UK, 2010.
- [21] Kayabekir, A. E., Arama, Z. A., & Bekdas, G., Effect of application factors on optimum design of reinforced concrete retaining systems. *Structural Engineering and Mechanics*, 80(2), 113-127, 2021.
- [22] Jahjouh, M. M., Arafa, M. H., & Alqedra, M. A., Artificial Bee Colony (ABC) algorithm in the design optimization of RC continuous beams. *Structural and Multidisciplinary Optimization*, 47(6), 963-979, 2013.
- [23] Nigdeli, S. M., Bekdas, G., Kim, S., & Geem, Z. W., A novel harmony search based optimization of reinforced concrete biaxially loaded columns. *Structural Engineering and Mechanics*, 54(6), 1097-1109, 2015.
- [24] Bekdaş G., & Nigdeli S.M., Bat algorithm for optimization of reinforced concrete columns. In Joint Annual Meeting of GAMM and DMV, Braunschweig, Germany, 2016.
- [25] Bekdaş G., & Nigdeli S.M., Optimum Design Of Reinforced Concrete Columns Employing Teaching Learning Based Optimization. In 12th International Congress on Advances in Civil Engineering, Istanbul, Turkey, 2016.
- [26] Esfandiary, M. J., Sheikholarefin, S., & Bondarabadi, H. R., A combination of particle swarm optimization and multi-criterion decision-making for optimum design of reinforced concrete frames. *International Journal of Optimization in Civil Engineering*, 6(2), 245-268, 2016.
- [27] Chutani, S., & Singh, J., Use of modified hybrid PSO-GSA for optimum design of RC frame. *Journal of the Chinese Institute of Engineers*, 41(4), 342-352, 2018.
- [28] A. E. Kayabekir, G. Bekdaş and S. M. Nigdeli, Optimum Design of T-Beams Using Jaya Algorithm in 3rd International Conference on Engineering Technology and Innovation (ICETI), Belgrad, Serbia, 2019.
- [29] Kayabekir, AE, Bekdaş G, Nigdeli SM. Evaluation of Metaheuristic Algorithm on Optimum Design of T-Beams, 6th International Conference on Harmony Search, Soft Computing and Applications (ICHSA 2020), 16-17 July 2020, Istanbul, Turkey.
- [30] Kayabekir, A. E., & Nigdeli, M., Statistical Evaluation of Metaheuristic Algorithm: An Optimum Reinforced Concrete T-beam Problem. In *Advances in Structural Engineering—Optimization* 299-310. Springer, Cham, 2021.
- [31] Nigdeli, Sinan Melih, Gebraül Bekdaş, and Xin-She Yang. Metaheuristic optimization of reinforced concrete footings. *KSCE Journal of Civil Engineering*, 22.11(2018), 4555-4563, 2018.
- [32] Mergos, P. E., & Mantoglou, F., Optimum design of reinforced concrete retaining walls with the flower pollination algorithm. *Structural and Multidisciplinary Optimization*, 61(2), 575-585, 2020.

- [33] Mergos, P. E., Optimum design of 3D reinforced concrete building frames with the flower pollination algorithm. *Journal of Building Engineering*, 44, 102935, 2021.
- [34] Paya-Zaforteza, I., Yepes, V., Hospitaler, A., & Gonzalez-Vidosa, F., CO₂-optimization of reinforced concrete frames by simulated annealing. *Engineering Structures*, 31(7), 1501-1508, 2009.
- [35] Park, H. S., Kwon, B., Shin, Y., Kim, Y., Hong, T., & Choi, S. W., Cost and CO₂ emission optimization of steel reinforced concrete columns in high-rise buildings. *Energies*, 6(11), 5609-5624, 2013.
- [36] Camp, C. V., & Huq, F., CO₂ and cost optimization of reinforced concrete frames using a big bang-big crunch algorithm. *Engineering Structures*, 48, 363-372, 2013.
- [37] Yepes, Víctor, José V. Martí, and Tatiana García-Segura. Cost and CO₂ emission optimization of precast–prestressed concrete U-beam road bridges by a hybrid glowworm swarm algorithm. *Automation in Construction*, 49 (2015), 123-134, 2015.
- [38] García-Segura, T., Víctor Y., Multiobjective optimization of post-tensioned concrete box-girder road bridges considering cost, CO₂ emissions, and safety. *Engineering Structures*, 125 (2016): 325-336, 2016.
- [39] Camp, C. V., and Andrew, A., CO₂ and cost optimization of reinforced concrete footings subjected to uniaxial uplift. *Journal of Building Engineering*, 3 (2015), 171-183, 2015.
- [40] Arama, Z. A., Kayabekir, A. E., Bekdaş, G., & Geem, Z. W., CO₂ and cost optimization of reinforced concrete cantilever soldier piles: a parametric study with harmony search algorithm. *Sustainability*, 12(15), 5906, 2020.
- [41] Kayabekir, A. E., Arama, Z. A., Bekdaş, G., Nigdeli, S. M., & Geem, Z. W., Eco-friendly design of reinforced concrete retaining walls: multi-objective optimization with harmony search applications. *Sustainability*, 12(15), 6087, 2020.
- [42] Cakiroglu, C., Islam, K., Bekdaş, G., & Billah, M., CO₂ Emission and Cost Optimization of Concrete-Filled Steel Tubular (CFST) Columns Using Metaheuristic Algorithms. *Sustainability*, 13(14), 8092, 2021.
- [43] Cakiroglu, C., Islam, K., Bekdaş, G., Kim, S., & Geem, Z. W., CO₂ Emission Optimization of Concrete-Filled Steel Tubular Rectangular Stub Columns Using Metaheuristic Algorithms. *Sustainability*, 13(19), 10981, 2021
- [44] Yang, X. S. Flower pollination algorithm for global optimization. In *International conference on unconventional computing and natural computation*, Springer, Berlin, Heidelberg. 240-249, 2012
- [45] EN (Veranst.): EN 1992-1-1 Eurocode 2: Design of concrete structures. Brussels : CEN, 2005
- [46] Yeo, Dong Hun, and Florian A. Potra. Sustainable design of reinforced concrete structures through CO₂ emission optimization. *Journal of Structural Engineering*, 141(3), B4014002, 2015.