

## PAPER DETAILS

TITLE: Savcilibeyit (Kaman-Kirsehir) Gold Mineralization and Its Genetic Relationship With Post-Collisional Exhumation and Extensional Tectonics in Central Anatolia, Turkey

AUTHORS: Yurdal GENÇ,Mehmet Tekin YÜRÜR

PAGES: 155-176

ORIGINAL PDF URL: <https://dergipark.org.tr/tr/download/article-file/608976>

## Savcılıbeyit (Kaman-Kırşehir) Gold Mineralization and Its Genetic Relationship With Post-Collisional Exhumation and Extensional Tectonics in Central Anatolia, Turkey

*Savcılıbeyit (Kaman-Kırşehir) Altın Cevherleşmesi ve Cevherleşmenin Orta Anadolu'nun (Türkiye) Çarpışma Sonrası Yükselme ve Genleşme Tektoniği ile Olan Kökensel İlişkisi*

YURDAL GENÇ<sup>\*1</sup>, M.TEKİN YÜRÜR<sup>1</sup>

<sup>1</sup> Hacettepe University, Department of Geological Engineering, 06800 Beytepe, Ankara, Turkey

Geliş (received) : 03 Eylül (September) 2018

Kabul (accepted) : 24 Kasım (November) 2018

### ABSTRACT

Gold exploration works in central Anatolia, Turkey, were intensified during the last decade, and potentially important gold mineralizations were discovered. In the region, important gold discoveries hosted by metamorphic and granitic rocks are, in the west, Savcılıbeyit and Terziali (Kırşehir), in the middle part, Himmetdede and Mahmatlar (Kayseri), Akçataş (Nevşehir), and at the southeast, Gümüşler (Niğde) mineralizations. The Savcılı gold mineralization consists mainly of gold-quartz veins, and is the first discovered gold enrichment hosted by metamorphic rocks of west-central Anatolia. These veins are situated at the southeastern margin of the Cefalıkdağ-Baranadağ granite-migmatite dome, at 60 km west of the city of Kırşehir. In this study, preliminary results of geological and structural investigations of the gold-quartz veins are presented.

The study area is part of the Palaeozoic-Mesozoic Kırşehir Massif that comprises mainly high-grade metamorphic and plutonic rocks covered by Cenozoic sediments. The gold-quartz veins are hosted by migmatite, migmatitic gneiss, gneiss-schist-marble intercalations, calc-silicate gneiss and marble. Quartz veins are discordant with respect to the foliation and major lithologic boundaries, and have sharp contacts with the enclosing metamorphic wall rocks. Veins occur as single or composite, relatively continuous veins that are up to about 2 km long and extend for at least 200 m down dip. Their thickness ranges from a few millimetres to two metres.

The gold-quartz veins consist mainly of quartz, arsenopyrite, pyrite and secondary haematite and limonite. Other common minerals in the veins are calcite, muscovite, biotite, chlorite and epidote. The distribution of gold is erratic, and only weathered, haematite- and limonite-rich parts of the veins near the surface consistently display higher gold contents.

Homogenisation temperatures obtained from fluid inclusions in the quartz vein have a wide range, from 160°C to well above 400°C. The fluid inclusions are generally rich in carbon dioxide and also have high salinities (20-33 % NaCl equivalent).

The gold-quartz veins have many similarities to orogenic gold deposits in terms of metal associations, wall-rock alteration assemblages, mineralogy, formation conditions and structural control. The spatial association of the veins with migmatites, high-grade metamorphic rocks and granitoids suggests an origin related to metamorphism, uplift and/or migmatite doming and granitoid emplacement in central Anatolia.

**Keywords:** Granitoid-migmatite doming, Kırşehir Massif, orogenic gold deposit, Turkey.

### ÖZ

Orta Anadolu'da altın aramaları son on yılda artmış ve önemli potansiyel altın cevherleşmeleri keşfedilmiştir. Bölgede, metamorfik ve granitik kayalar içinde önemli altın bulguları batıda Savcılıbeyit ve Terziali (Kırşehir), orta kesimlerde Himmetdede ve Mahmatlar (Kayseri), Akçataş (Nevşehir), ve güneydoğuda Gümüşler (Niğde) cevherleşmeleridir. Savcılıbeyit altın cevherleşmesi daha çok altınlı kuvars damarlarında görülmekte ve Orta-Batı Anadolu'da metamorfik kayalar içinde keşfedilen ilk altın zenginleşmesidir. Bu damarlar Kırşehir'in 60 km batısındaki Cefalıkdağ-Baranadağ granit-migmatit domunun güneydoğu eteklerinde bulunmaktadır. Bu çalışmada bu altınlı kuvars damarlarının jeolojik ve yapısal ön çalışmaları sunulmuştur

<sup>\*</sup> Y. Genç

e-posta: ygenç@hacettepe.edu.tr

*İnceleme alanı, Senozoyik çökellerle örtülü ve çoğunlukla yüksek dereceli metamorfik ve derinlik kayaçlarının yer aldığı Paleozo-yik-Mezozoyik Kırşehir Masifi içinde yer almaktadır. Altınlı kuvars damarları migmatitler, migmatitik gnayslar, gnays-şist-mermer aralanmaları, kalk-silikatik gnayslar ve mermerler içinde bulunmaktadır. Kuvars damarları metamorfik yan kayaçların yapraklanma ve önemli litolojik düzlemleriye uyumsuz olup damarların yankayaçlarla dokanaları keskindir. Damarlar, tek veya damar sistemleri şeklinde gözlenmekte olup, devamlılıkları doğrultu yönünde 2 km ye, eğim yönünde ise en az 200 m ye ulaşmaktadır. Damar kalınlıkları birkaç mm den 2 metreye kadar değişmektedir.*

*Altınlı kuvars damarları başlıca kuvars, arsenopirit, pirit ve ikincil hematit ve limonitten oluşmaktadır. Diğer yaygın mineraller kalsit, muskovit, biyotit, klorit ve epidottur. Damarlar içinde altının dağılımı düzensiz olup damarların sadece oksitlenmiş, hematit ve limonitçe zengin yüzeye yakın kesimlerinde yüksek altın değerleri elde edilmektedir..*

*Kuvars damarlardaki sıvı kapanımlarının homojenleşme sıcaklıkları 160° C'den 400° C'nin üzerinde geniş bir aralıkta dağılım göstermektedir. Sıvı kapanımları genelde karbon dioksitçe zengin olup yüksek tuz içeriklidirler (% 20-33 NaCl eşdeğeri).*

*Altınlı kuvars damarları, metal içeriği, yan kayaç alterasyonu, mineraloji, oluşum koşulları ve yapısal kontrol açısından orojenik altın yatakları ile benzer özelliklere sahiptir. Damarların migmatitlerle, yüksek dereceli metamorfik kayaçlar ve granitoidlerle olan mekânsal birlikteliği bunların oluşumunun Orta Anadolu'daki metamorfizma, yükselme ve/veya migmatitik domlaşma ve granitoid yerleşimi ile ilgili olduğunu ifade etmektedir.*

**Anahtar Kelimeler:** Granitoid-migmatit domlaşması, Kırşehir Masifi, orojenik altın yatağı, Türkiye.

## INTRODUCTION

Although central Anatolia has historically been recognised for hosting significant lead-zinc, iron, molybdenum-copper, fluorite and antimony deposits, gold exploration has only intensified during the last decade, resulting in the discovery of a few potentially important gold-ore bodies (Savcılıbeyit and Çayağzı (Terziali)-Kırşehir; Mahmatlar-, and Himmetsede-Kayseri, Akçataş-Nevşehir and Gümüşler-Niğde) (Fig. 1). Some previous studies have established the existence of gold in this region. Özcan and Çağatay (1989) reported scheelite mineralisation associated with quartz veins within silicified metamorphic rocks of the Kırşehir region. Genç et al. (2003) and Coşkun Delibaş and Genç (2004) described saprolitic gold enrichments in the same region. Moreover, gold grains have been found in some stream sediments derived from metamorphic rocks of the massif (H.Türkmen, pers. comm. 2004).

In the Gümüşler and Çamardı areas of the Niğde Province, Pehlivan and Alpan (1986) found gold, cinnabar, and scheelite grains in stream sediments and identified several anomalous locations for gold, mercury and scheelite. In the same region, Akçay (1994) reported near-surface gold enrichment zones (up to 37 ppm) in Sb-Hg-W-bearing quartz veins.

Gold-quartz veins (GQVs) near Savcılıbeyit village, 60 km west of Kırşehir, are the first discovered gold occurrences hosted by metamorphic rocks in west-

central Anatolia (Fig. 1). They were found in 1999 as a result of systematic exploration carried out in central Anatolia by MTA (Mineral Research and Exploration Institute). Gold anomalies were detected through a programme of stream-sediment, soil and hard-rock geochemical studies facilitated by trenching and 670 m of drilling. There is no sign of ancient gold-mining activities at the site. However, the Kırşehir region does have important vein-type fluorite deposits hosted by granitoids (Bayındır, Akçakent, Pöhrenk, etc.) (Genç et al. 2003a).

The first studies on these GQVs were undertaken by Genç and Türkmen (2002) and Genç (2004). In these studies, GQVs were classified as mesothermal and orogenic gold deposits. However, their modes of formation are still not well understood. According to Groves et al. (1998), orogenic gold deposits form during compressional to transpressional deformation processes at convergent plate margins in accretionary or collisional orogens. Central Anatolia is part of the Alpine-Himalayan collisional belt and located within the convergence zone between the Eurasian and Afro-Arabian plates, and GQVs formation may therefore be attributed to the regional compressional tectonic regime. Recently, Genç and Yürür (2010) proposed that an extensional tectonic regime took place after the Late Cretaceous convergence in the region. This is why geological outlines that may be derived from the study of gold mineralizations would be useful to better understand the regional

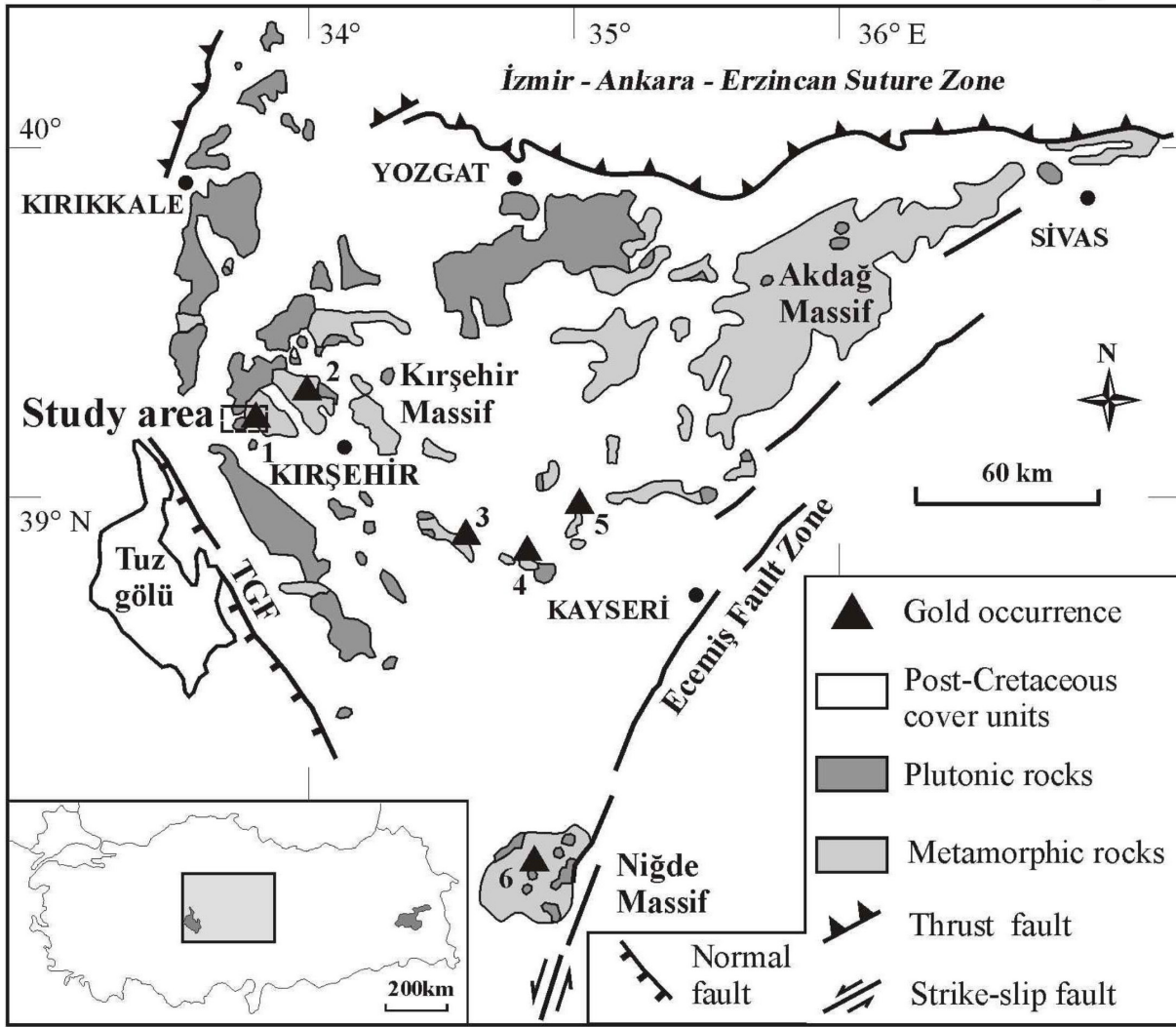


Figure 1. Simplified geological map of the central Anatolian massifs, showing the main lithological units and first-order fault zones (modified from the 1:500.000-scale geological map (Ankara sheet) of Turkey, MTA, 2002) and gold mineralizations. TGF: Tuz Gölü Fault. Gold mineralizations: 1: Savcılıbeyit, 2: Terziali, 3: Akçataş, 4: Mahmatlar, 5: Himmetdede and 6: Gümüşler.

Şekil 1. Ana litolojik birimleri ve önemli fay zonlarını (MTA, 2002 1:500.000 ölçekli Türkiye jeoloji haritası, Ankara paftasından değiştirilerek) ve altın cevherleşmelerinin konumlarını gösteren Orta Anadolu masiflerinin sadeleştirilmiş jeoloji haritası. TGF: Tuzgölü Fayı. Altın cevherleşmeleri: 1: Savcılıbeyit ; 2: Terziali; 3: Akçataş; 4: Mahmatlar; 5: Himmetdede ve 6: Gümüşler.

geological evolution and the relationship between mineralization processes.

The present study aims a) to give the preliminary results of studies carried out to date and to identify geologic and tectonic processes that may have controlled and influenced the development of the gold-quartz veins in central Anatolia, b) to determine the timing of vein formation, and c) to ascertain the physical and chemical conditions of vein formation. The results of this study provide a basis for further

studies in central Anatolia and intend to develop a better understanding of the geologic and tectonic parameters of the environment of gold-quartz vein formation.

### Geology

In central Anatolia, magmatic, metamorphic and ophiolitic rock assemblages are together termed the Central Anatolian Massif, Kırşehir Massif, Kızılırmak

Massif or Central Anatolian Crystalline Complex (Ketin 1955; Seymen 1982; Tolluoğlu 1986; Göncüoğlu et al. 1991). The Central Anatolian Massif is bounded by the Izmir-Ankara-Erzincan suture zone to the north, the Ecemiş fault zone to the east, and the Tuz Gölü fault to the southwest (Fig. 1). The massif consists of three submassifs, namely the Kırşehir, Akdağ and Niğde (Fig. 1).

The oldest rock units in the Kırşehir submassif are metamorphic rocks which comprise mainly migmatite, gneiss, schist and marble. The stratigraphically lowest unit mainly contains the highest-grade rocks: amphibolite-interlayered migmatites, migmatitic gneisses, alternations of calc-silicate gneisses, schists, and marbles. This basal unit is unconformably overlain by lower-grade (amphibolite-facies) mica schists with marble, amphibolite, calc-silicate gneiss and quartzite intercalations. These metamorphic rocks grade upward into the lowest-grade (greenschist- to amphibolite-facies) rocks dominated by marble with mica and amphibole-schist intercalations. Silurian-Devonian and Carboniferous-Permian depositional ages for the basal and upper parts of the Kırşehir Massif, respectively, were proposed by Genç (2003).

Conflicting ages are given in the literature for the metamorphism of the massif. Older studies suggested a polyphased metamorphic history with ages ranging from Early Palaeozoic to Late Mesozoic (Polak 1958; Brinkmann 1971 and 1976). However, any traces of pre-Alpine movements in central Anatolia cannot be observed (Ketin 1966; Erkan 1976; Seymen 1984; Whitney et al. 2001). New petrogenic and radiometric data obtained from metamorphic and plutonic rocks of central Anatolia indicate a single-phase, Late Cretaceous regional metamorphism related to crustal thickening, and a later high-temperature overprint associated with magmatism, uplift and exhumation (Erkan and Ataman 1981; Seymen 1982; Whitney and Dilek 1998; Whitney et al. 2001). In comparison to moderate P - high T regional metamorphic rocks, the low P - high T - overprinted metamorphic areas occupy relatively restricted zones, typically with a granitic or gneissic core (Göncüoğlu 1986; Erkan 1980; Özer and Göncüoğlu 1983; Tülümen 1980; Whitney and Dilek 1998).

Metamorphic rocks of the massif are characterised by clockwise P-T paths at moderate P-high T (6-7 kbar and 750 °C) with local low P-high T (3-5 kbar

and 700-800 °C) overprinting (Erkan 1976; Seymen 1984 and Whitney et al. 2001). For peak regional metamorphic conditions in central Anatolia, Whitney et al. (2003) gave an age interval of 85-92 Ma (U-Pb SHRIMP) (Santonian-Turonian; Late Cretaceous, ICS, 2004). K-Ar cooling ages of biotite and amphiboles from gneiss and schists indicate a Late Cretaceous (Maastrichtian-Campanian) (69-74 Ma in the Kırşehir region, 74-81 Ma in the Niğde region) age for the overprinting low P - high T - metamorphism. These ages are interpreted to indicate an emplacement or cooling age of igneous rocks injected into regional metamorphites, and also the cooling age of the metamorphic sequences (Erkan and Ataman 1981; Göncüoğlu 1986; Whitney et al. 2003).

The metamorphic rocks are intruded by granitoid and syenitoids with radiometric ages ranging from  $79.5 \pm 1.7$  to  $39.2 \pm 1.2$  Ma (total Pb, Ar/Ar, Rb-Sr and apatite fission track ages) (Ayan 1963; Ataman 1972; Erkan and Ataman 1981; Whitney et al. 2001; Kadioğlu et al. 2003; İlbeyli et al. 2004).

The metamorphic rocks are overlain by an Upper Cretaceous, unmetamorphosed volcano-sedimentary series of diabase, basalt, radiolarian chert, pelagic limestone, shale and serpentinite (Seymen 1982), and the two units are separated by the Kaman detachment fault. A sedimentary sequence of Lutetian age nonconformably overlies the metamorphic basement rocks, Upper Cretaceous series and granitoids of the Kırşehir Massif.

### Savcılıbeyit Area

The Savcılıbeyit area is at the southeastern flank of the Cefalıkdağ-Baranadağ granitoid-migmatite domal structure (Fig. 2). The long axis of the dome trends NE-SW, and dome dimensions are ~ 10 km NE-SW by ~ 5 km NW-SE. Although the eastern margin of the dome is transitional with metamorphic rocks, its western margin is defined by detachment faults. The dome is asymmetrical, with the apex located on the eastern side of the structure. The granite-migmatite dome and surrounding metamorphic rocks are described by Genç (2004) as the Kırşehir Metamorphic Core Complex. The granitic core of the dome comprises monzonite, monzodiorite and granite. These rocks are coarse-grained and contain feldspar megacrysts up to 10 cm in length (Geven 1992; Aydın and Önen 1999; İlbeyli et al. 2004). The youngest magmatic phases are represented by



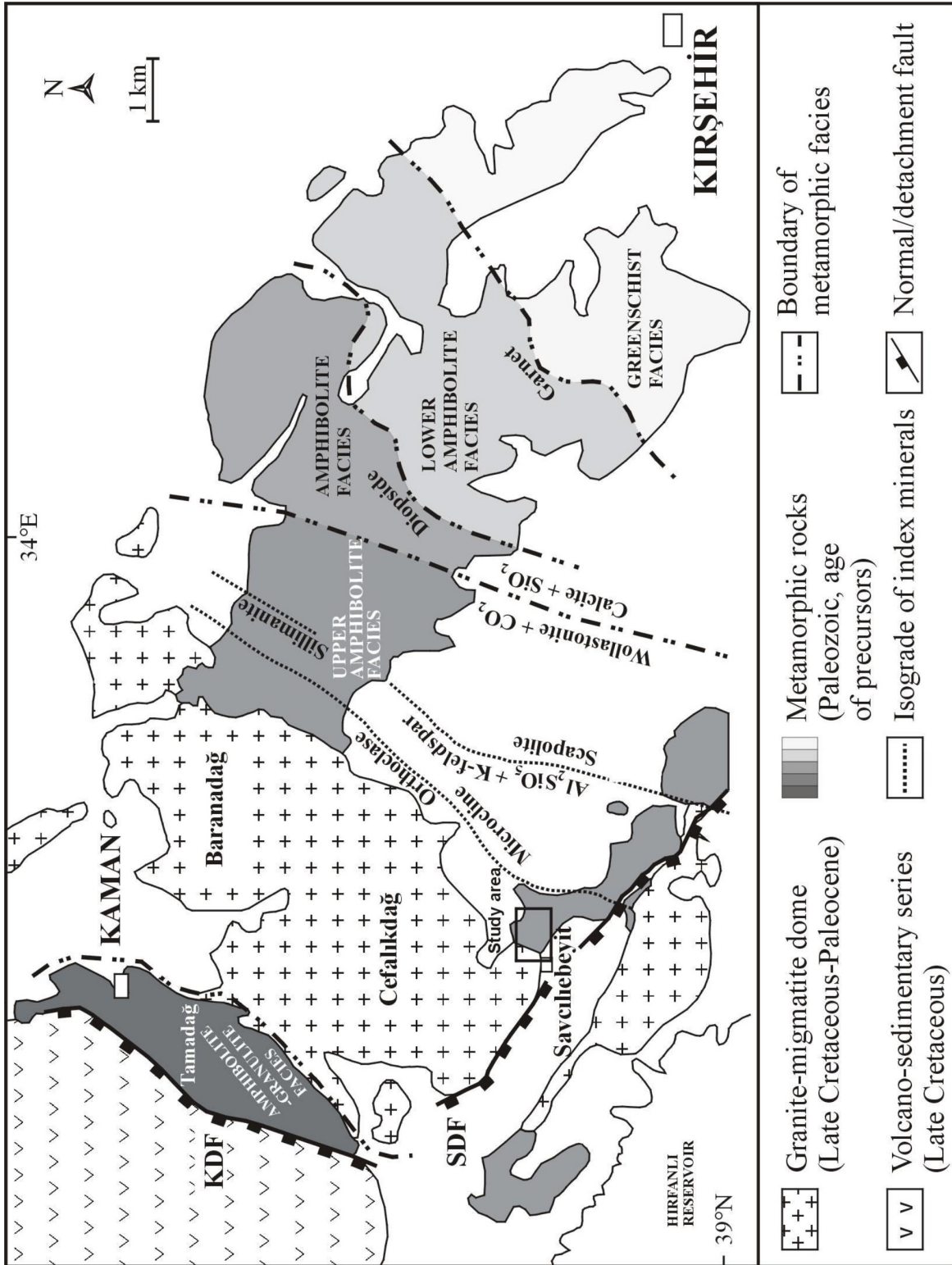


Figure 2. Geological map of the Kırşehir-Kaman region showing isograds in metamorphic rocks surrounding the Cefalıkdağ-Baranadağ granite-migmatite dome (isograd locations modified from Seymen 1981, Seymen 2000, Tolluoğlu 1986, and Whitney et al. 2001).

Şekil 2. Cefalıkdağ-Baranadağ granit-migmatit domu etrafındaki metamorfik kayaçların izogradlarını gösteren Kırşehir-Kaman bölgesi jeolojisi haritası (izograd yerleri Seymen, 1981, Seymen 2000, Tolluoğlu 1986 ve Whitney vd. 2001'den düzenlenmiştir).

microgranite stocks and aplitic-pegmatitic dykes that cut the monzonitic and granitic rocks of the older phases. 40 and 47 Ma apatite fission-track ages for these intrusives are reported by Fayon et al. (1999). In the Tamadağ area (Fig. 2), metamorphic rocks are preserved in the northwestern part of the dome roof and are intruded by aplite dykes. At the contacts, they are slightly contact metamorphosed.

Around Savcılıbeyit village, the transitional granitic core-metamorphite contacts dip moderately (40-50°) to the northwest and are defined by a narrow zone of steeper foliations and closely spaced orthoclase, microcline, sillimanite and scapolite isograds. These isograds parallel the core-envelope contact in the east. In the Savcılıbeyit area, lithologic layering and metamorphic stratigraphy are overturned, with younging directions facing mainly to the east and southeast. In normal, primary metamorphic stratigraphy, from bottom to top, the metamorphic rocks in the area consist of migmatite, migmatitic gneiss, a gneiss-schist-marble intercalation, quartzite, calc-silicate gneiss and marble (Fig. 3).

Migmatites are located in the western part of the area and have transitional contacts with the granitic-monzonitic core of the migmatite dome outside of the map area (Fig. 4). From core in the west to the east, and in the opposite sense of the dip direction of the lithological contacts, there is a gradational and conformable change from diatexitic migmatite, through metatexitic migmatite and migmatitic gneiss, and then to gneiss and schist.

The diatexitic migmatite unit has a granitic appearance and corresponds to the hornblende granite of Geven (1992). This unit is dominated by a granitic matrix and contains enclaves of disrupted refractory layers and blocks of amphibolite, marble and metatexitic (Fig. 5A). In the diatexitic, pre-migmatisation structures are not preserved, but there is a well-developed flow banding.

The metatexitic migmatite unit consists of dark green-grey, fine-grained layered host containing pre-migmatisation structures such as layering, banding and foliation (Fig. 5B, C and D). The majority of leucosomes parallel these structures. A gneiss-schist-marble intercalation overlies the migmatite unit, and mainly comprises mica gneiss, mica schist, amphibole schist, calc-schist and marble (Fig. 3). It locally contains small (15-20 m long) pockets of lensoidal pegmatite, tourmaline pegmatite and leucogranite.

The calc-silicate gneiss unit covers the gneiss-schist-marble intercalation along a transitional contact, and consists mainly of calcite, wollastonite, diopside and garnet. A 5-10 m thick, characteristically deep brown-grey quartzite layer is stratigraphically between the calc-silicate gneiss and gneiss-schist-marble intercalation (Fig. 3). The calc-silicate gneiss unit grades into white marble at the top of the sequence (Fig. 3).

All units have undergone regional metamorphism to varying degrees, from greenschist-amphibolite to granulite facies (Erkan 1976; Tolluoğlu and Erkan 1989; Seymen 2000; Whitney et al. 2001). Metamorphic-mineral parageneses reveal steep metamorphic gradients away from the granite, through the granulite-grade cordierite-sillimanite-bearing core, into amphibolite- and greenschist-facies rocks towards the southeastern flank of the dome (Fig. 2) (Seymen 1982; Tolluoğlu 1986; Whitney et al. 2001).

The dominant structural feature of the metamorphic rocks is folding. Seymen (1981) distinguished four folding and one brittle deformation phases in these metamorphic rocks. According to Seymen (1981), ductile deformation was followed by a brittle stage indicating uplift to higher levels. Whitney et al. (2003) reported a minimum age of 69 Ma for fabric-forming deformation in metamorphic rocks of the Niğde region. Other significant structural features are the NW-SE-trending Savcılı and NE-SW-trending Kaman detachment faults (Fig. 2). The Savcılı detachment fault lies in the southern part of the dome and the Kaman detachment fault, which limits the dome to the west, is between the dome and Upper Cretaceous volcano-sediments. Whilst the Kaman fault must be older and active during the late stages of doming, the Savcılı fault was active after dome emplacement, during Oligocene-Pliocene time (Genç and Yürür 2004).

### Gold-Quartz Veins

Quartz veining occurs in two main types: barren pegmatitic quartz veins and gold-quartz veins. Barren pegmatitic quartz veins are characterised by pegmatitic texture and comprise mainly K-feldspar and massive quartz (Fig. 6A); they occur near the granite core, within the migmatites, and have a NE-SW orientation generally parallel to the aplite dykes (Figure 4).

The gold-quartz veins are hosted by migmatite, migmatitic gneiss, the gneiss-schist-marble intercalation,

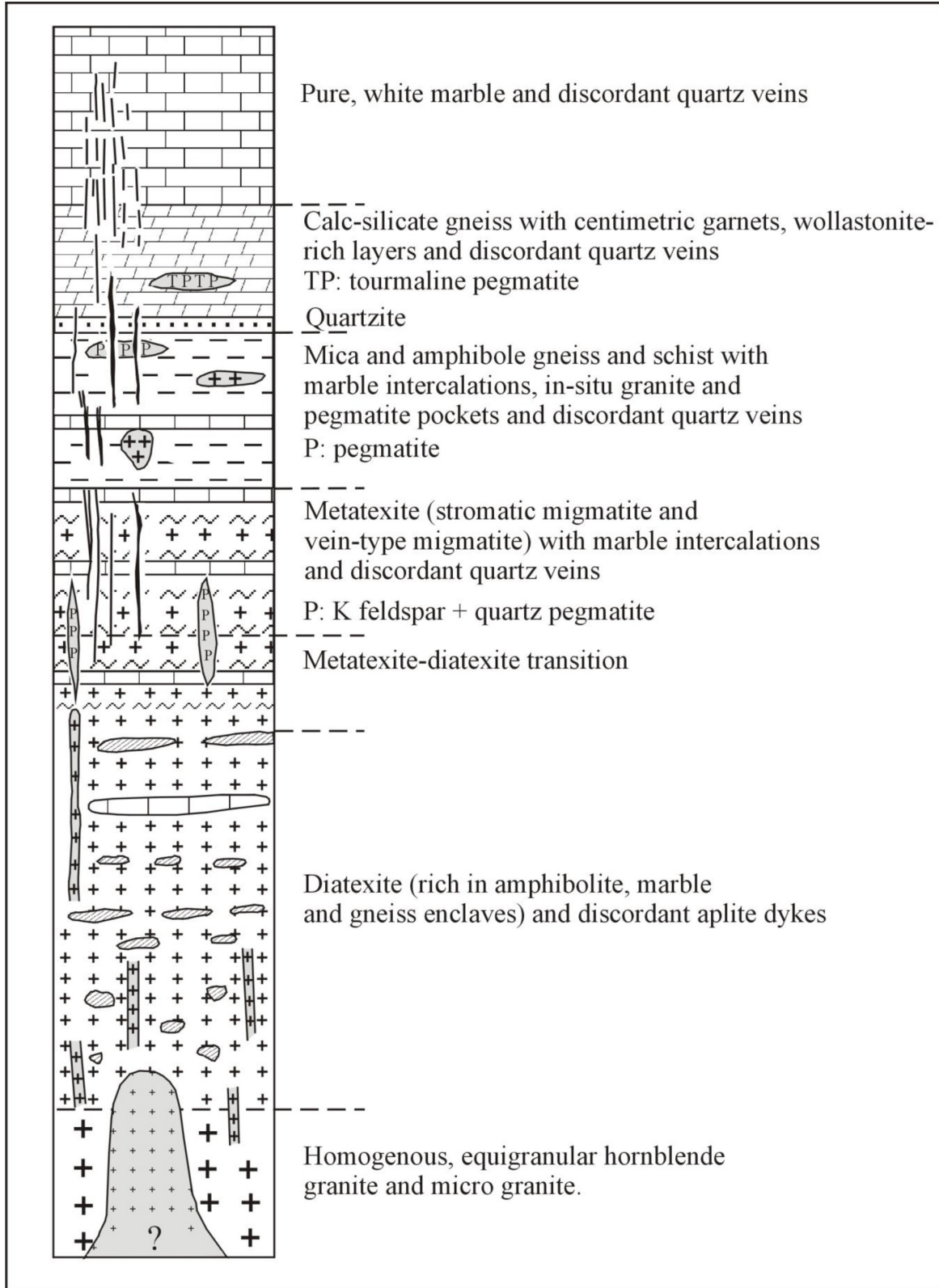


Figure 3. Schematic vertical section through the metamorphic-magmatic sequence around Savcılıbeyit (not to scale).

Şekil 3. Savcılıbeyit yakınlarındaki metamorfik-magmatik birimlerin ilişkilerini gösteren şematik dikme kesit (ölçeksiz).



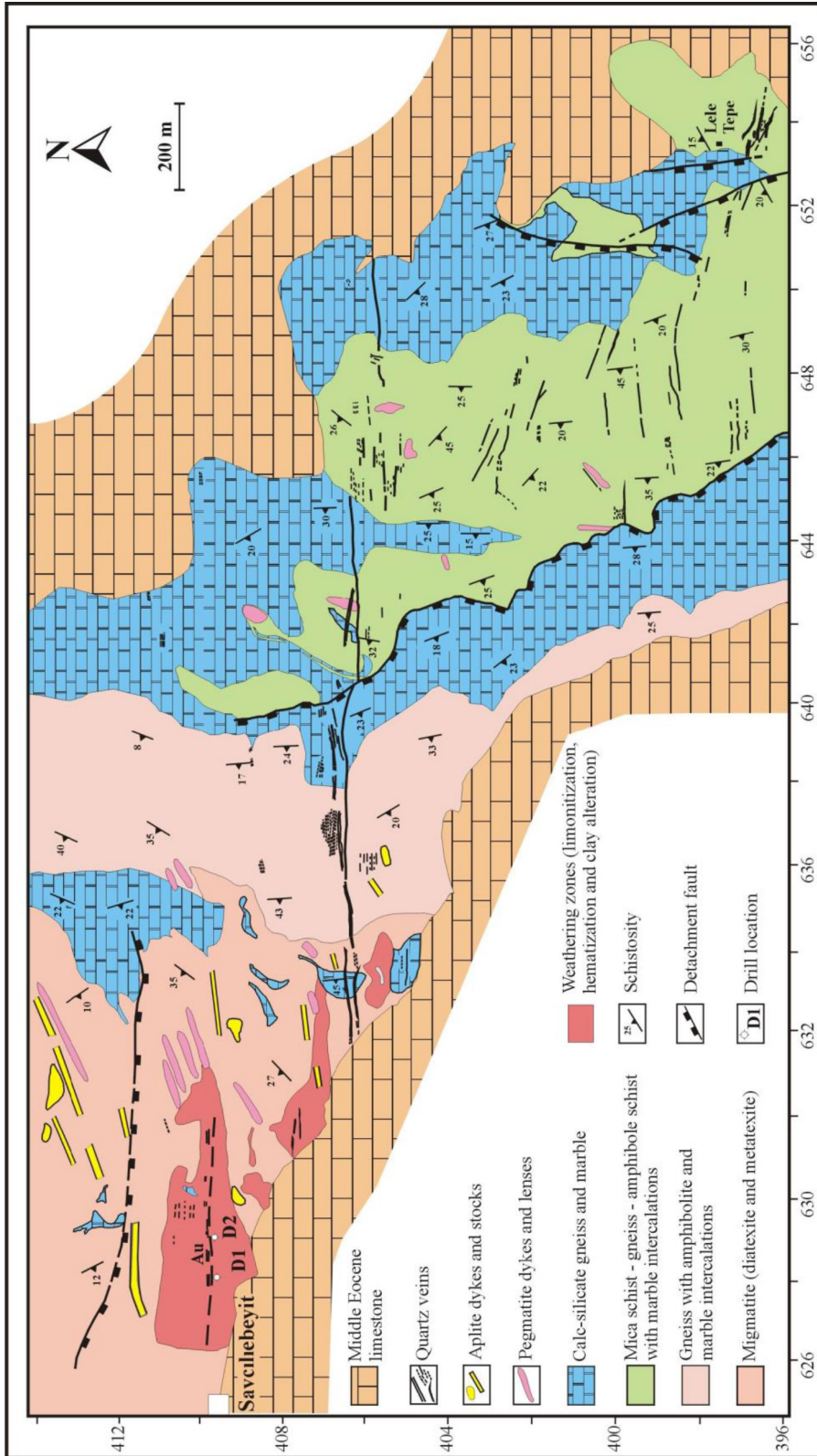


Figure 4. Geological map of the Savcılıbeyit district showing the location of gold-quartz veins (modified from Türkmen et al. 2000, unpublished data).

Şekil 4. Savcılıbeyit yöresi altınlu kuvars damarlarının konumunu gösteren jeolojik harita (yayımlanmamış Türkmen vd. 2000'den düzenlenmiştir).



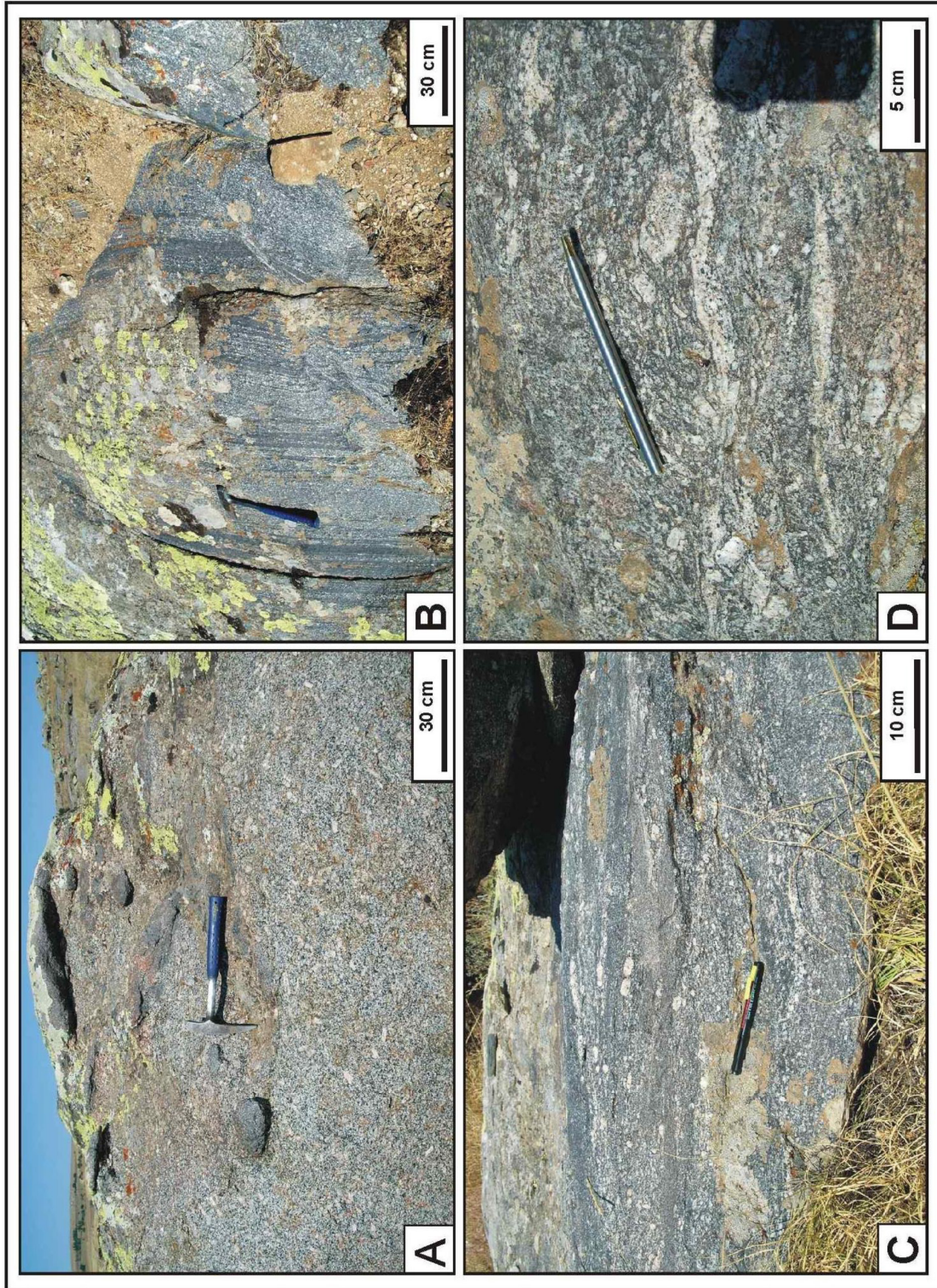


Figure 5. Migmatites in outcrop. A) Diatexitic migmatite with oriented amphibolite enclaves; B) Stromatic migmatite; C) Metatexitic migmatite with remnants of an amphibolite layer; D) Metatexite-diatexite transition. Disturbed layered leucosomes and oriented K-feldspar megacrysts within a diatexitic matrix. The photographs are from the western part of Üç Tepe.

Şekil 5. Migmatit mostraları. A) Diateksitik migmatitlerde yönelmiş amfibolit anklavları; B) Stromatik migmatit; C) Metateksitik migmatit içinde amfibolit kalıntıları; D) Metateksit-diyateksit geçişi. Diyateksitik hamur içinde ilksel şekilleri bozulmuş tabakalı lökosomlar ve yönelmiş K-feldspat megakristalleri.



calc-silicate gneiss and marble (Fig. 4), and have a general E-W orientation. Vein systems consist mainly of a well-defined set of closely spaced, subparallel and structurally related veins that are individually discontinuous and have variable widths (Fig. 4, Fig. 6B, C, D and E). The quartz veins are discordant with respect to the foliation and major lithologic boundaries, and have sharp contacts with the enclosing metamorphic wall rocks (Fig. 4, Fig. 6G, H and I). In the deeper parts of the system, as seen in the drill core, some quartz veins parallel foliation surfaces (Fig. 7). Although the thickness of the veins ranges from a few millimetres to two metres, and up to hundreds of metres in length, most of the quartz veins are less than 15 cm wide and continuous for only a few metres. The longest quartz veins made up of massive white quartz are on the decimetre to metre scale, with minor brecciation and calcite enrichment at vein margins. The general strike of the subvertical gold-quartz veins is E-W (Fig. 4). They have been detected down to depths >200m. Adjacent to the quartz veins, the host rocks commonly display metasomatic effects (Fig. 7). Between the distant individual quartz veins, the metamorphic rocks rarely show visible evidence of alteration. Simple quartz veins are well developed in the mica schist, whereas subparallel vein sets are observed in the marble. The subparallel veins commonly occur in zones up to 40 m wide. The vein quartz is generally massive (Fig. 6D and F), clear white to dark grey and coarse grained. Banded and breccia textures are abundant (Fig. 6C) and, in some quartz veins, a fibrous structure is also widespread. Breccia and stockwork textures in veins indicate very low temperature and pressure conditions. According to McCuaig and Kerric (1994), banded veins indicate that hydrothermal fluids responsible for vein formation were approximately at lithostatic pressures and underwent transient sublithostatic- to supralithostatic-fluid cycling. On the other hand, massive to laminated and fibrous veins indicate high-fluid pressures during vein formation. Large (up to 15-20 cm in length) euhedral to subhedral quartz crystals form coarse-crystalline aggregates in some veins.

The gold-quartz veins consist mainly of quartz, arsenopyrite, pyrite, and secondary haematite and limonite. Quartz is the most abundant mineral, typically comprising more than 90% of the veins. The other most abundant gangue minerals are calcite, muscovite/sericite, biotite, chlorite and epidote (Fig. 8). Haematite and limonite are dominant near the

surface, whereas the arsenopyrite and pyrite contents of the veins increase with depth (Fig. 6F, G and Fig. 7). The proportion of sulfides is highly variable, from only traces to 3-4 volume percent of the veins. Other ore minerals detected include tennantite, stibnite, galena, sphalerite, chalcopyrite, pyrrhotite, molybdenite and gold. The quartz veins that cut the marble also contain scheelite.

Supergene minerals include limonite, haematite, malachite, azurite and covellite. Scarce gold occurs as isolated grains within quartz in limonite-haematite-rich veins near the surface, or as inclusions in sulfides in the deeper parts of the veins. The distribution of gold in the veins seems to be erratic, and only the limonite-rich parts of the veins near the surface consistently display higher gold contents – up to 16 ppm (H. Türkmen, pers. comm. 2004). The gold grade decreases downward. Although gold values are sporadically higher in the veins, trenching indicates average gold grades of approximately 1g/t Au. The gold distribution pattern in the veins indicates a close correlation with arsenic (Fig. 7).

### Alteration

In the Savcılı area, host rocks display both supergene and hydrothermal alteration. The supergene alteration zones are characterised by their reddish brown colours (Fig. 6F) and by high limonite, haematite, kaolinitic clay and local gypsum content. Supergene alteration is restricted to the upper part of the quartz veins and to surrounding metamorphic rocks covered by Lutetian sediments (Figure 4). In the uncovered metamorphic rocks and quartz veins, supergene alteration is quite weak or absent. As a general trend, the intensity of alteration decreases from the contact with the Lutetian sediments at the top to the lower parts of the metamorphites and quartz veins.

Hydrothermal alteration is selectively vein-controlled and limited to the immediate vicinity of the quartz veins (Fig. 7). Alteration zones generally vary from a few cm to 2 m in width, with broader zones surrounding the thickest quartz veins. Within the same lithology, such as gneiss or schist, the alteration may be traced parallel to the quartz veins, both along strike and down dip, for tens of metres, showing little variation in mineralogy. The proximal alteration zone is characterised by the mineral assemblage quartz, biotite, albite, calcite, chlorite, sericite and/or muscovite, epidote, pyrite, arsenopyrite and pyrrhotite.

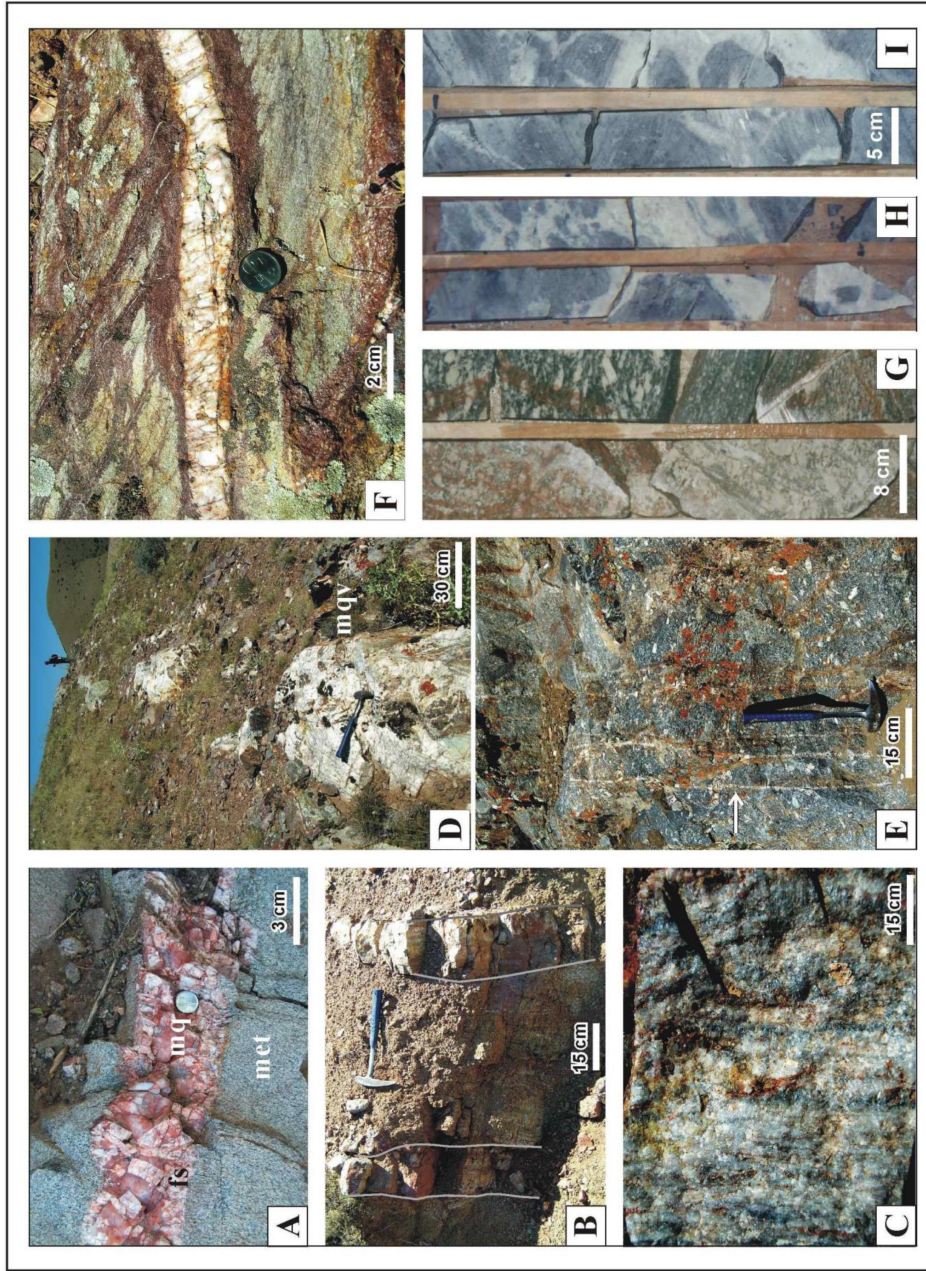


Figure 6. Photographs of gold-quartz veins and associated alteration in the Savcılıbeyit area. A) Pegmatitic quartz veins, mq: massive quartz core, fs: feldspar-rich selvage, met: metatextitic host rock. B) Parallel quartz-, and hematite-limonite veins that cut the metatextitic migmatite. C) Banded quartz vein in outcrop. D) Massive quartz vein (mqv) that cuts the migmatitic gneiss. E) Parallel quartz veinlets that cut the metatextitic migmatite. F) Supergene alteration zones rich in hematite-limonite veins. G, H and I) Sections of drill core D-1 showing vein textures at different depths. G) 25.50-26.0m; metatextitic migmatites cut by quartz-pyrite veinlets. Hematitic staining on migmatites is common. H and I) Quartz breccia veins (white) with wall-rock fragments (gray) in mica gneiss. 115.5-116 m and 125-125.50 m.

Şekil 6. Savcılıbeyit alanındaki altınlı kuvars damarları ve bunlara bağlı alterasyonları gösteren fotoğraflar. A) Pegmatitik kuvars damarları, mq: masif kuvars; fs: feldspatça zengin kenar zonu; met: metateksitik yan kayaç. B) Metateksitik migmatiti kesen paralel kuvars ve hematit-limonit damarları. C) Bantlı kuvars damar mostrası. D) Migmatitik gnaysı kesen masif kuvars damarı (mqv). E) Metateksitik migmatiti kesen paralel kuvars damarcıkları. F) Hematit-limonit damarları açısından zengin superjen alterasyon zonları. G, H ve I) D-1 sondajı karotlarının değişik derinliklerinde gözlenen damar dokuları. G) 25.50-26.0 m; kuvars-pirit damarcıklarınca kesilmiş metateksitik migmatitler. Migmatitlerde hematit boyamaları yaygındır. H ve I) Mika gnaysda breşik kuvars damarları (beyaz) ve yankayaç parçaları (gri). 115.5-116 ve 125-125.50 m.



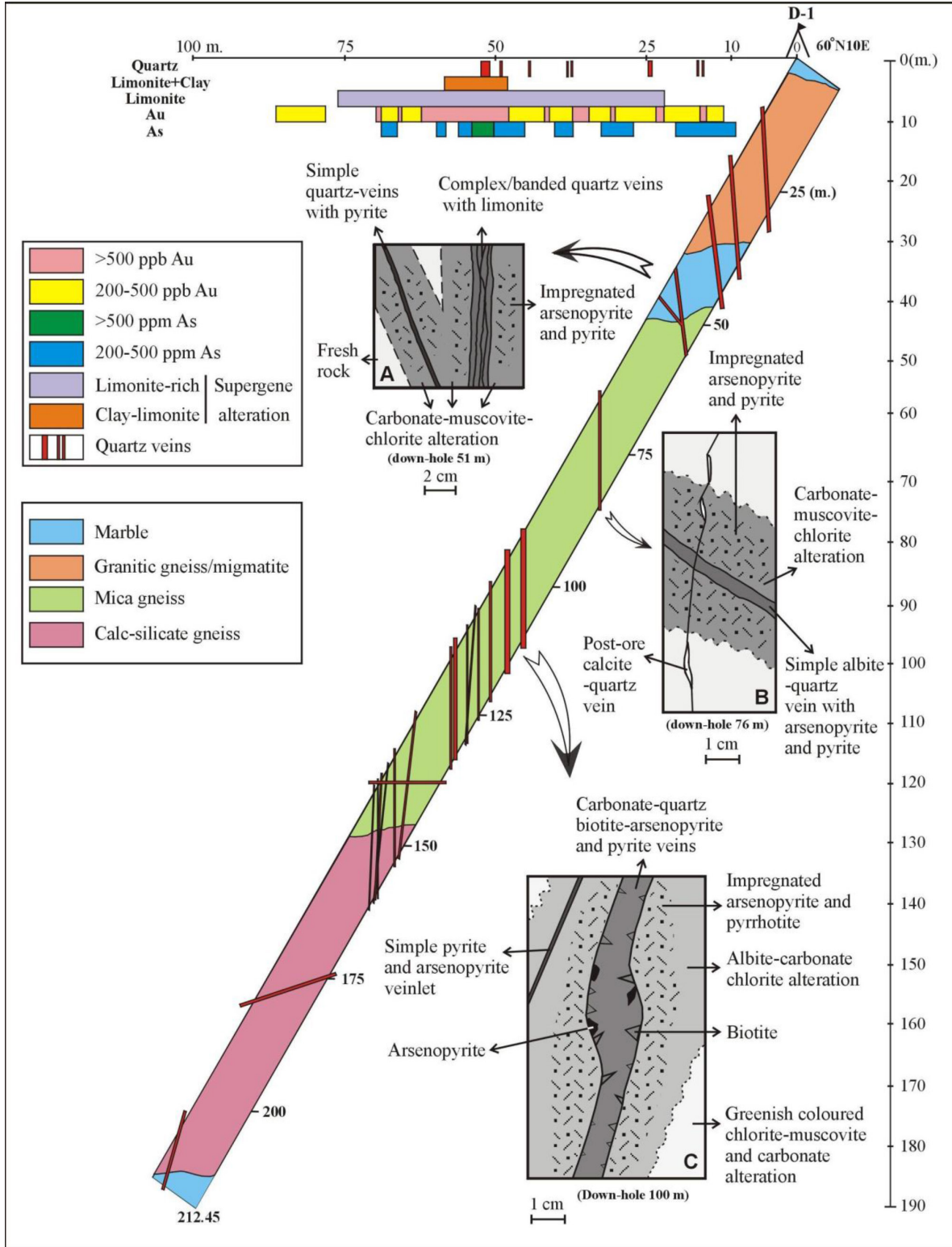


Figure 7. The distribution of gold-quartz veins that cut the metamorphic lithologies in drill core D-1. Data in the upper left side of the drill core is derived from surface trenches. The boxes lettered A, B and C show details from gold-quartz veins and surrounding alteration types detected in the drill core.

Şekil 7. D-1 sondaj karotlarında metamorfik birimleri kesen altınlı kuvars damarlarının dağılımları. Karotların üst sol tarafındaki veriler yüzeydeki hendeklerden elde edilmiştir. A, B ve C olarak isimlendirilmiş kutular karotlarda saptanmış altınlı kuvars damarları ve bunlarla ilişkili bozunma türlerine ait ayrıntıları göstermektedir.



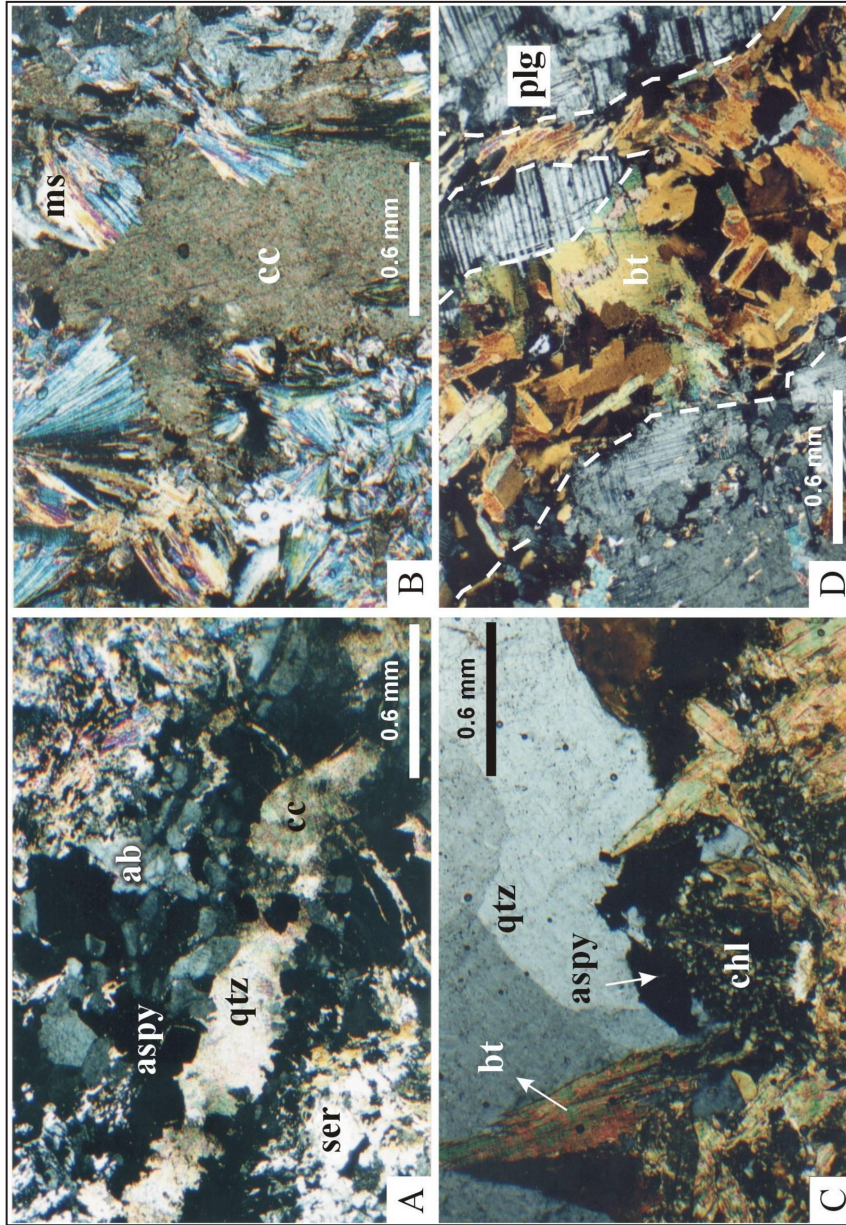


Figure 8. Gold-quartz veins and associated hydrothermal wall-rock alteration features in thin sections. A) Quartz-carbonate veins with albite and arsenopyrite selvages in intensely sericitised and chloritised migmatitic host rock, ab: albite; aspy: arsenopyrite; cc: calcite; qtz: quartz; ser: sericite (drill core D1, down-hole depth 76 m); B) Pervasively carbonatised and sericitised migmatitic host rock, cc: calcite; ms: muscovite (drill core D1, down-hole depth 80 m); C) Quartz-biotite-chlorite-arsenopyrite vein. The vein consists of a quartz core and biotite-chlorite and arsenopyrite selvages. Biotites grown from the wall towards the center of the vein, aspy: arsenopyrite; bt: biotite; chl: chlorite; qtz: quartz (drill core D1, down-hole depth 100m); D) Biotite vein that cuts plagioclases of amphibolite interlayers in mica gneiss, bt: biotite; plg: plagioclase (drill core D1, down-hole depth 140m).

Şekil 8. Altınlı kuvars damarları ve damarlara eşlik eden hidrotermal yan kayaç alterasyonlarının incekesit görüntüleri. A) Yaygın olarak serizitleşmiş ve kloritleşmiş migmatitik yan kayaç içinde albit ve arsenopirit kenar zonlu kuvars-karbonat damarları. ab: albit; aspy: arsenopirit; cc: kalsit; qtz: kuvars; se: serizit (D-1 sondaj karotları, yüzeyden derinliği 76 metre); B) Yaygın olarak karbonatlaşmış ve serizitleşmiş migmatitik yan kayaç; cc: kalsit; ms: muskovit (D-1 sondaj karotları, yüzeyden derinliği 80 metre); C) Kuvars-biyotit-klorit-arsenopirit damarı. Damarın içi kuvars, kenarları biyotit-klorit ve arsenopiritten oluşmuştur. Biyotitler damarın kenarından merkeze doğru büyümüşlerdir. aspy: arsenopirit; bt: biyotit; chl: klorit; qtz: kuvars (D-1 sondaj karotları, yüzeyden derinliği 100 m); D) Mika gnaysın amfibolit katmanlarındaki plajiyoklazları kesen biyotit damarı; bt: biyotit; plg: plajiyoklaz. (D-1 sondaj karotları, yüzeyden derinliği 140 m).

The distal alteration assemblage is chlorite, sericite and calcite. Boundaries between proximal and distal alteration zones may be sharp or gradational over centimetres to decimetres. The hydrothermal mineral assemblages vary with depth (Fig. 7). Proximal alteration in the upper part is marked by light white-yellow and brownish colours, indicating sericitisation and silicification. In the deeper part of the vein system, the main proximal alteration minerals are quartz, biotite, muscovite, albite, chlorite, calcite and epidote (Fig. 7, Fig. 8A, B, C and D). Quartz, biotite and albite occur as both veinlets and irregular aggregates in metamorphic rocks whereas muscovite, chlorite and calcite in distal alteration zones mainly replace feldspar in the wallrock and occur as aggregates (Fig. 8A, B). Proximal alteration haloes around quartz veins also contain disseminated arsenopyrite, pyrite and pyrrhotite (Fig. 7). The muscovite + albite paragenesis of the alteration zones suggests that the quartz veins have formed from fluids of approximately neutral pH (McCuaig and Kerric 1994). Opaque mineral assemblages within the quartz veins reflect greenschist- to amphibolite-facies conditions. According to McCuaig and Kerric (1994), the pyrite  $\pm$  arsenopyrite  $\pm$  stibnite  $\pm$  pyrrhotite paragenesis characterises subgreenschist- to low-amphibolite-facies conditions, whereas the loellingite  $\pm$  arsenopyrite  $\pm$  magnetite  $\pm$  ilmenite  $\pm$  pyrrhotite assemblage is typical of amphibolite-granulite-facies conditions. The variation of hydrothermal mineral assemblages with depth suggests changing pressure and temperature conditions with depth or lateral proximity to the granitic core of the granite-migmatite dome.

### Fluid inclusions

Studies of fluid inclusions in quartz hosted by different types of veins revealed complex phase assemblages of the trapped fluids. Primary depositional features of the quartz are generally destroyed. They typically contain abundant secondary and pseudo-secondary fluid inclusions along intergranular and transgranular fractures. Primary fluid inclusions show heterogeneous entrapment features. The same sample contains both vapour-rich and liquid-rich primary inclusions with very different liquid/vapour ratios. Their shapes are also highly variable; i.e., inclusions with regular forms are mostly liquid fluid-rich and co-exist with more rounded gas-rich inclusions. The size of inclusions varies between 5  $\mu$ m and 70  $\mu$ m. The homogenisation temperatures of the primary fluid

inclusions from discordant quartz veins have a wide range (160°C to above 400°C), whereas quartz samples from foliation-parallel veins give a slightly more restricted homogenisation temperature range, from 220°C to well above 400°C. The fluid inclusions are generally rich in carbon dioxide and also have high salinities. The salinity of the studied fluid inclusions is between 20% and 33% NaCl equivalent (Sezerer-Kuru and Genç 2003).

### Discussion and Conclusions

Temporal relationships between vein formation and geological events

According to the geological and structural evidence presented here, the Savcılı gold-quartz veins are epigenetic and structurally controlled by E-W-trending vertical tensional fractures. The veins cut across all rock types except the Middle Eocene sediments. Pegmatitic quartz-feldspar veins and auriferous quartz veins formed at different structural levels and may have different ages of formation within the context of granite-migmatite doming. Pegmatitic barren quartz-feldspar veins are hosted by migmatite close to the granite core and are spatially related to aplite dykes. Gold-bearing quartz veins cut across the foliation and bedding of the schists and gneisses that were folded during the granite-migmatite doming. To the west, gold-quartz veins also cut progressively higher-grade rocks towards the migmatite core. This veining post-dates metamorphism and ductile deformations of Late Cretaceous age. Erkan and Ataman (1981) reported  $69 \pm 1.7$  and  $69.7 \pm 1.6$  Ma K-Ar ages on biotite in metamorphic rocks of the Kırşehir region; these ages record the cooling of the metamorphic rocks to <350°C and provide a minimum age for metamorphic deformation, and also a maximum age for brittle deformation and/or vein formation. The presence of blocks of quartz-vein material in the basal conglomerate of the Lutetian sediments suggests that the veins are older than Lutetian (40-46 Ma, ICS, 2004). These ages are also in agreement with fission-track ages (40 and 47 Ma: Fayon et al. 1999) of the granites, which give the age of the granites' exhumation to near the surface. Thus, the hydrothermal event associated with mineralisation took place between Late Cretaceous (Maastrichtian) and Lutetian, during the latest, brittle stages of doming and exhumation of the metamorphic rocks of the Kırşehir Metamorphic Core Complex. This also suggests that gold-quartz veins were formed by a long-

lived hydrothermal system of crustal scale. Without radiometric age data, it is not possible to give a better estimate for the duration of vein formation. Similar long-lived hydrothermal systems are also reported in the northwestern Alps and in the Variscan belt of Western Europe (Pettke et al. 1999 and 2000; Bouchot et al. 2000; Boiron et al. 2003). According to Pettke et al. (1999 and 2000), the ore-bearing fluid was produced by a 20 m.y. history of prograde metamorphic devolatilisation of calc-schists at depth. On the other hand, for the Variscan Au, Sb, W orogenic deposits in the French Massif Central, Bouchot et al. (2000) and Bellot et al. (2003) gave a duration of 5 Ma for the Au-W-Sb “metalliferous peak”.

### Conditions of gold-quartz vein formation

Sharp contacts with host rocks and the small extent of metasomatism in the wall rocks indicate that fluid/rock ratio was low during vein formation, and fluids appear to have migrated slowly. The banded and brecciated nature of some quartz veins suggests multiple fluid events. On the other hand, alteration mineral parageneses reveal that quartz veins have formed at different structural levels and pressure-temperature conditions. According to McCuaig and Kerric (1994), in granitoid host rocks, the quartz-albite-muscovite-chlorite paragenesis characterises sub- to mid-greenschist-facies conditions and shallower formation depths (225 - 400°C, <1 - 3 kbar and <5 to 10 km), whereas the occurrence of biotite in the paragenesis indicates higher pressure-temperature and depth conditions (375 - 550°C, 2 - 4 kbar, 7 - 14 km, greenschist-amphibolite transition). Mono- or bi-mineralic alteration selvages (Fig. 8 A, C) adjacent to the veins are indicative of formation within an open hydrothermal system. Homogenisation temperatures of fluid inclusions give a wide temperature of formation range, from 160°C to well above 400°C for quartz veins. Based on fluid-inclusion data, these temperature conditions – which are lower than those of the amphibolite facies – appear to have developed during the last stages of doming or the waning stages of regional metamorphism. Discordant quartz veins in the migmatite and gneiss units suggest that vein emplacement must have taken place under retrograde, brittle conditions in a near-surface environment above the brittle-ductile transition zone. Such a situation is possible after shallowing of the high-grade metamorphic rocks and migmatites through migmatite doming and/or post-orogenic granitoid emplacement, during brittle fracturing at shallow

crustal depths (Fig. 9).

According to structural and petrographic data given in this study, the initiation of granite-migmatite doming was synchronous with low pressure-high temperature metamorphism in the region. The age of metamorphism in the Kırşehir Massif is interpreted from K/Ar biotite and hornblende ages to have been between  $69.7 \pm 1.6$  and  $74.2 \pm 2.7$  Ma (Erkan and Ataman 1981). These data were interpreted by those authors as the emplacement and cooling ages of the granitoids. Similarly, in the Niğde region, exhumation of sillimanite-zone metamorphic rocks and plutons to shallower depths (<12 km) occurred between 78 to 74 Ma (Whitney et al. 2003). Ascent and emplacement of the granitoid-migmatite dome may have developed partly through ductile remobilization of the migmatitic lower part of the metamorphic pile and partly through emplacement of successive generations of hornblende granite and microgranite derived by melting of the lower crust (Fig. 9A, B). Blocks of high-grade metamorphic rocks and deformation structures within metatexite, and the orientation of enclaves parallel to the general flow structure within diatexite, apparently represent a flow pattern due to upward migration of the migmatites (Figs. 5 and 10). Migmatites may have formed at different depths. Under normal geothermal gradients (30 - 40°C/km), migmatite formation can occur at depths of about 15 - 25 km. During metamorphism, the geothermal gradient, however, may be higher than normal (50 - 150°C/km), and migmatite formation can occur at about 4 - 10 km below the surface (Mehnert, 1968). High-grade metamorphic rocks and granitoids imply a high thermal gradient in the Kırşehir region. Accordingly, migmatitisation in the Savcılıbeyit area may have occurred at shallower depths – at less than 10 km. Active shallow Curie point depths (8-10 km) in central Anatolia (Genç and Yürür 2010) also support this conclusion. The cause of the asymmetry and southeastward tilting of the dome may have been due to movements on the Kaman detachment fault. Tilting of the dome may have been responsible for the southeastward overturning of the metamorphic sequence and the opening of tension fractures later filled by gold-quartz veins (Fig. 9B, C).

### The origin of fluids

The origin of the fluids responsible for the formation of gold-quartz veins in high-grade metamorphic rocks has long been debated. Different sources have



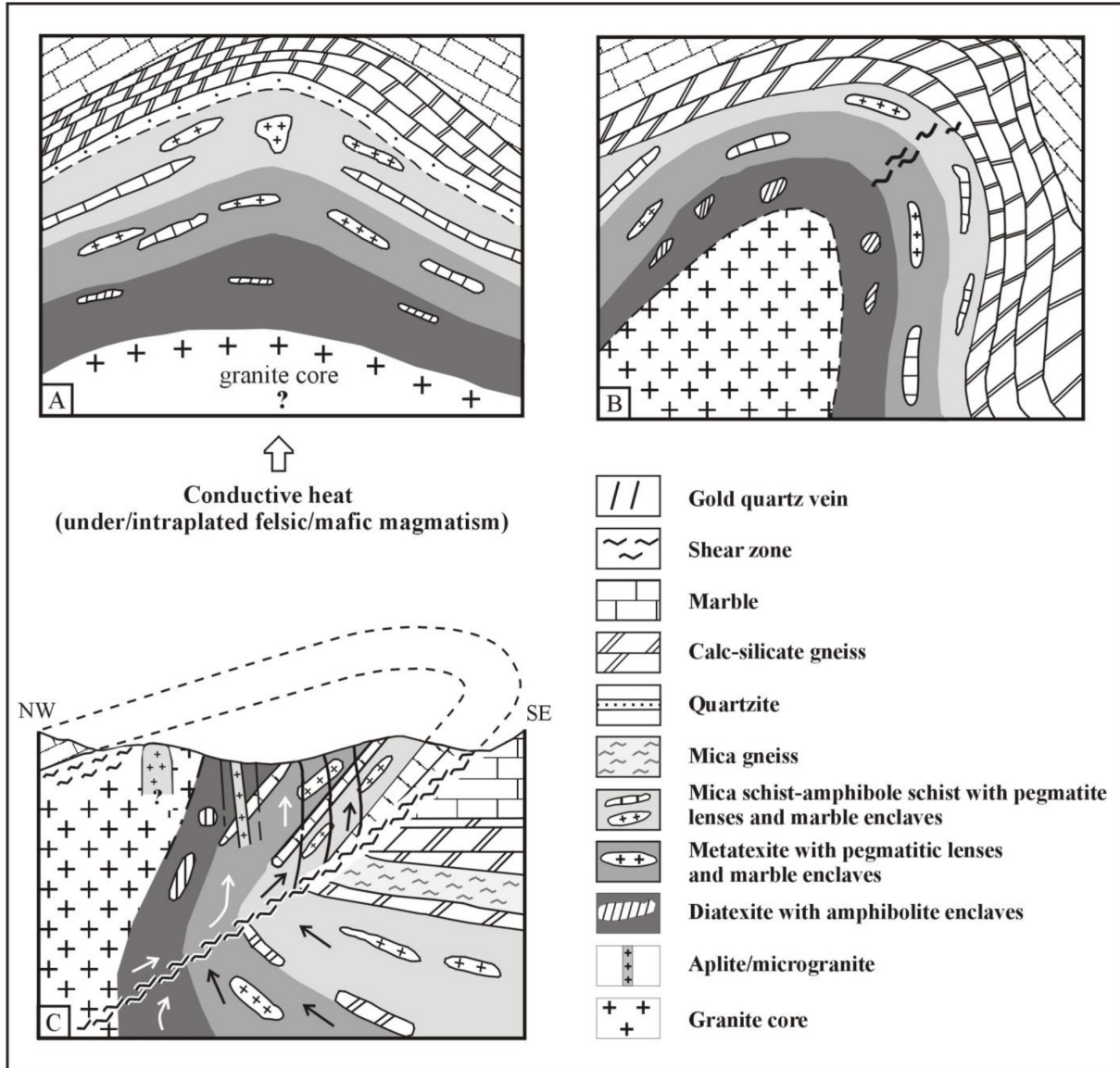


Figure 9. A schematicized scenario (not to scale) for the evolution of granite-migmatite doming and quartz veining in the Savcılıbeyit area. A) Prograde metamorphism and partial melting of the lower part of the metamorphic sequence by heat input during late Cretaceous underplating felsic/mafic magmatism. B) Wide-spread partial melting triggered the ascent of the granite-migmatite dome. C) Tilting and emplacement of the dome, formation of tension fractures in the upper part of the dome and filling of these fractures later with gold-quartz veins.

Şekil 9. Savcılıbeyit alanındaki granit-migmatit domu ve kuvars damarlarının oluşumunun evrimini gösteren ölçeksiz şematik senaryo. A) İlerleyen metamorfizma ve Geç Kretase'de felsik/mafik magmatizmadan gelen ısı ile metamorfik istifin alt kesiminin kısmi ergimesi. B) Granit-migmatit domunun yükselmesini tetikleyen geniş yayımlı kısmi ergime. C) Domun eğim kazanması ve yerleşmesi, domun üst kısmında açılma çatlaklarının oluşumu ve daha sonra bu çatlakların altınlı kuvars damarları ile dolması.

been proposed for the fluids, such as magmatic, metamorphic and upper-mantle degassing, and/or lower crust granulitisation (Bennett and Barker 1992; Yardley and Bottrell 1992; Groves 1993; Munz et al. 1995; Robert 1995; Boiron et al. 1996; Bierlein et

al. 1998; Goldfarb et al. 1998; Stüve 1998; Eilu et al. 1999; Gleeson et al. 2003; Groves et al. 2003). For some regions, the role of meteoric waters penetrating to deeper parts of the crust through detachment faults has also been considered important (Munz et

al. 1995; Robert 1995).

For the Savcılıbeyit area, the origin of the gold-quartz vein-forming fluids is as yet uncertain. The close temporal and spatial association of migmatite and post-orogenic granitoids with gold-quartz veins suggests that fluids may have been both of magmatic or metamorphic origin. However, in the literature, highly saline and CO<sub>2</sub>-rich fluid inclusions characteristic of the Savcılı area are generally accepted as a sign of mantle degassing or lower-crust granulitisation (Fyon et al. 1984; Cameron 1988). Alternatively, saline-H<sub>2</sub>O fluids are accepted as representing saline brines that have, through time, percolated down through metamorphic rocks, or as deeply sourced fluids that were trapped during post-peak metamorphism (Guha and Kanwar 1987; Bennett and Barker 1992; Hagemann and Ridley 1993).

Moderately to highly saline ore-forming brines are also detected in iron-oxide copper (gold) deposits (Hitzman 2000; Pollard 2000 and 2001). However, these deposits display extensive sodic alteration, comprising albite, magnetite, chlorite, or actinolite, usually associated with scapolite, haematite, epidote, calcite and titanite (Haynes 2000). Neither alteration types nor ore-mineral content of the Savcılı gold-quartz veins are similar to those of iron-oxide copper (gold) systems. The cause of the high salinity of ore-forming fluids in the Savcılı area could be metaevaporitic intercalations within calc-silicate gneisses, surface saline-water sources, or interaction of hydrothermal fluids with anhydrous rocks. The existence of metaevaporitic intercalations within the Kırşehir massif was reported by Genç (2001). On the other hand, recent deep drilling and isotope studies have documented the presence of highly saline fluids (up to 40 wt% NaCl equivalent) in basement rocks at depths of up to 10 km (Möller et al. 1997; Smith et al. 1998; Stober and Bucher 1999; Gleeson et al. 2003). In accordance with this documentation, Mullis et al. (1994) reported CO<sub>2</sub>-rich continental fluids from the Central Alps and concluded that the CO<sub>2</sub> component was derived from the oxidation of graphitic matter – especially in the vicinity of sulfate-bearing metasediments – and from decarbonation reactions.

Observations of drill cores reveal that, in the deeper part of the section at Savcılıbeyit, wollastonite-rich calc-silicate gneisses are abundant. According to Bucher and Frey (1994), wollastonite-rich rocks do not form in regional metamorphic settings under

closed-system conditions; they may only form by interaction of a carbonate-rich source rock with a foreign, externally derived H<sub>2</sub>O-rich fluid. These fluids may be released during partial melting of pelitic rocks lying in the deeper part of the metamorphic pile. Under these conditions, calcite and quartz may react and produce wollastonite and release CO<sub>2</sub> gas. This consideration suggests that CO<sub>2</sub>-rich fluid inclusions in the Savcılıbeyit quartz veins were mainly metamorphic in origin. A similar conclusion is given by Pettke et al. (1999 and 2000) for the northwestern Alps. According to those authors, metamorphic devolatilisation of Mesozoic calc-schists is the main source of ore-forming fluids. This conclusion further suggests that higher temperature conditions in the deeper part of the crust caused partial melting and released metamorphic fluids, while metamorphic rocks exhumed to shallower levels are on their retrograde path. These fluids precipitated the post-metamorphic gold-quartz veins in the cooling rocks. Heterogeneous entrapment features, such as the presence of liquid-rich inclusions in addition to inclusions having highly variable liquid/vapour ratios, and vapour-rich inclusions in the same sample, and the wide range of homogenisation temperatures of the fluid inclusions, suggest that mixing of hot metamorphic fluids with cold, surface-derived, oxidised waters is also an important factor for gold enrichment in the quartz veins.

Consistently higher gold contents of veins near the surface may be explained through secondary enrichments caused by supergene alteration. The spatial and temporal distribution of supergene alteration zones and the absence of abundant hydrothermal quartz within the secondary alteration suggest that oxidising, limonite- and haematite-forming fluids in the Savcılı area did flow downward. The invoked fluid source is the overlying Lutetian sediments. These fluids have used the preexisting fractures and surfaces, hence, mostly affected the upper part of the quartz veins and surrounding host rocks.

In conclusion, Savcılı gold-quartz veins have many similarities to orogenic gold deposits of the Alpine and Variscan collisional belts in terms of metal associations, wall-rock alteration assemblages, mineralogy, formation conditions and structural control. The known Sb-Hg-W ( $\pm$  Au) deposits of the Niğde region and the newly discovered gold mineralizations of the Kırşehir, Kayseri and Nevşehir regions suggest that the extensional tectonics and granite-migmatite



dome structures of central Anatolia constitute a favorable geological environment for orogenic gold deposits. The existence of gold deposits in similar metamorphic and tectonic environments of the Alpine and Variscan belts indicates that future discoveries in central Anatolia are likely to be of economic significance. Further field investigations are necessary to better understand the extent and mode of formation of these gold enrichments.

### Acknowledgements

The field work for this study would not have been possible without the assistance of Halil Türkmen and generous support from the Mineral Research and Exploration Institute of Turkey (MTA). This research was supported by Research Funds of the Hacettepe University (Project no: 0601602004). We are thankful to reviewers Dr. Ahmet GÖKÇE and Dr. Mehmet ŞENER for their constructive remarks to improve the manuscript.

### REFERENCES

- Akçay M., 1994. Genesis of the stibnite-cinnabar-scheelite deposits of the Gümüşler area, Niğde, central Turkey and implications for their gold potential. Ph.D thesis, University of Leicester, 241pp. (unpublished).
- Ataman G. 1972. Etude préliminaire sur l'âge radiométrique de Cefalıkdağ massif, l'un des massifs granitique-granodioritique au sud-est d'Ankara. Hacettepe Fen ve Mühendislik Bilimleri Dergisi 2(1): 44-49 (in Turkish with French abstract).
- Aydın SN. and Önen AP., 1999. Field, petrographic and geochemical features of the Baranadağ quartz monzonite of the Central Anatolian Granitoids, Turkey. *Turk. J. Earth Sci.* 8: 113-123.
- Ayan M., 1963. Contribution à l'étude petrographique et géologique de la region située au Nord-Est de Kaman. MTA publ. 115: 332 pp.
- Bellot JP, Lerouge C, Bailly L and Bouchot V., 2003. The Biards Sb-Au-bearing shear zone (Massif Central, France): an indicator of crustal-scale transcurrent tectonic guiding Late Variscan collapse. *Economic Geology* 98: 1427-1447.
- Bennett DG and Barker AJ., 1992. High salinity fluids: The results of retrograde metamorphism in thrust zones. *Geochimica et Cosmochimica Acta* 56: 81-95.
- Bierlein FP, Fuller T, Stüwe K, Arne DC and Keays RR., 1998. Wallrock alteration associated with turbidite-hosted gold deposits. Examples from the Palaeozoic Lachlan Fold Belt in central Victoria, Australia. *Ore Geology Reviews* 13: 345-380.
- Boiron MC, Cathelineau M, Banks DA, Yardley BWD, Noronha F, Miller FM., 1996. P-T-X conditions of late Hercynian fluid penetration and the origin of granite-hosted gold quartz veins in northwestern Iberia: A multidisciplinary study of fluid inclusions and their chemistry. *Geochimica et Cosmochimica Acta* 60: 43-57.
- Boiron MC., Cathelineau M., Banks DA., Fourcade S., Vallance J., 2003. Mixing of metamorphic and surficial fluids during the uplift of the Hercynian upper crust: consequences for gold deposition. *Chemical Geology* 194: 119-141.
- Bouchot V, Milesi JP and Ledru P., 2000. Crustal-scale hydrothermal palaeofield and related variscan Au, Sb, W orogenic deposits at 310-305 Ma (French Massif Central, Variscan Belt). *SGA News* 10: 1-12.
- Brinkmann R., 1971. Das kristalline Grundgebirge von Anatolien. *Geologische Rundschau* 60: 886-899.
- Brinkmann R., 1976. *Geology of Turkey*. Elsevier, Amsterdam, 158 pp.
- Bucher K and Frey M., 1994. *Petrogenesis of metamorphic rocks*. Springer, Heidelberg, 318 pp.
- Cameron EM., 1988. Archean gold: Relation to granulite formation and redox zoning in the crust. *Geology* 16: 109-112.
- Coşkun Delibaş E and Genç Y., 2004. Terziali-Çayağzı (Kırşehir) gold mineralization: initial findings of saprolitic gold enrichments in Kırşehir Massif. *Yerbilimleri* 30: 23-33 (in Turkish with English abstract).
- Eilu PK, Mathison CI, Groves DI and Allardye WJ., 1999. Atlas of alteration assemblages, styles and zoning in orogenic lode-gold deposits in a variety of host rock and metamorphic

setting, Geology and Geophysics Department (Centre for Strategic Mineral Deposits) and UWA Extension, The University of Western Australia Publication 30: 50pp.

- Erkan Y., 1976. Isograds determined in the regional metamorphic area surrounding Kırşehir and their petrological interpretation. *Yerbilimleri* 2(1): 23-54 (in Turkish with English abstract).
- Erkan Y., 1980. A study on regional metamorphism of northeastern part of Central Anatolian Massif (Akdağmadeni, Yozgat). *Bulletin of the Geological Society of Turkey* 23: 213-218 (in Turkish with English abstract).
- Erkan Y and Ataman G., 1981. A study on the age of metamorphism of Central Anatolian Massif (Kırşehir region) by K-Ar method. *Yerbilimleri* 8: 27-30 (in Turkish with English abstract).
- Fayon AK, Whitney DL and Dilek Y., 1999. Constraints on the transition from Alpine crustal thickening to extension in central Anatolia. *EOS* 80, 1066.
- Fyon JA, Crockett JH and Schwarcz HP., 1984. The Carshaw and Malga iron-formation- hosted gold deposits of the Timmins area. In: Colvine AC (ed.) *The Geology of Gold in Ontario*. Ontario Geological Survey Miscellaneous Paper 110: 98-110.
- Genç Y., 2001. The metamorphic textures and structures in the Başçatak (Akdağmadeni-Yozgat) Zn-Pb-Cu sulphide deposit, 54th Geological Congress of Turkey, Proceedings CD, 54-51 (in Turkish with English abstract).
- Genç Y and Türkmen H., 2002. Gold-quartz veins in Kırşehir Metamorphic Massif, 55th Geological Congress of Turkey, Abstracts Book, 102-103.
- Genç Y., 2003. New observations on the metamorphic stratigraphy of the Kırşehir Massif, 56th Geological Congress of Turkey, Extended Abstracts Book, 55-56.
- Genç Y, Türkmen H, Coşkun E, Çamaşırçioğlu A, Aydınlı I and Demiray B., 2003. Çayağzı-Terziali (Kırşehir) gold mineralization: the first example of unconformity-related gold mineralisations in the Kırşehir Metamorphic Massif, 56th Geological Congress of Turkey, Extended Abstracts Book, 120-121.
- Genç Y, Vennemann TW and Satir M., 2003a. Carbon, oxygen and hydrogen isotope evidence for the origin of the sediment hosted Pöhrenk (Çiçekdağı-Kırşehir-central Anatolia) fluorite deposit, Turkey. In: Eliopoulos et al (eds), *Mineral Exploration and Sustainable Development*, Proceedings vol. 2: 871-874. 7th Biennial SGA Meeting, Athens, Greece, 24-28 August 2003.
- Genç Y., 2004. Savcılı migmatite-dome hosted gold-quartz veins in Kırşehir Metamorphic Core Complex (KMCC), central Anatolia, Turkey. In: Chatzipetros AA and Pavlides SB (eds.), *Proceedings vol. 3: 1394-1397*. 5th International Symposium on Eastern Mediterranean Geology, Thessaloniki, Greece, 14-20 April 2004.
- Genç Y and Yürür T., 2004. The Kırşehir detachment faulting and a new interpretation of the "Savcılı Thrust Zone" in central Anatolia, Turkey. In: Chatzipetros AA and Pavlides SB (eds.) *Proceedings, vol. 1: 73-76*. 5th International Symposium on Eastern Mediterranean Geology, Thessaloniki, Greece, 14-20 April 2004.
- Genç Y and Yürür T., 2010. Coeval extension and compression in Late Mesozoic-Recent thin-skinned extensional tectonics in central Anatolia, Turkey. *Journal of Structural Geology* 32 (5), 623-640.
- Geven A., 1992. Mineralogy, Petrography and Geochemistry of Cefalikdağ Plutonic Rocks (Kaman region-Central Anatolia). Ph.D. thesis, Middle East Technical University, 165 pp. (unpublished).
- Gleeson SA, Yardley BWD, Munz IA and Boyle AJ., 2003. Infiltration of basinal fluids into high-grade basement, south Norway: sources and behaviour of waters and brines, *Geofluids* 3: 33-48.
- Goldfarb RJ, Phillips GN and Nokleberg WJ., 1998. Tectonic setting of synorogenic gold deposits of the Pacific Rim, *Ore Geology Reviews* 13: 185-218.
- Göncüoğlu MC., 1986. Geochronological age data from the southern part of the central Anatolia Massif. *Bulletin of Mineral Research and Exploration Institute of Turkey* 105/106: 111-124 (in Turkish).
- Göncüoğlu MC, Toprak V, Kuşçu İ, Erler A and Olgun E., 1991. The geology of the western part of

- the central Anatolia Massif, chapter 1: Southern part. National Oil and Gas Company of Turkey, Report No: 2909, 140pp (in Turkish with English abstract).
- Groves DI., 1993. The crustal continuum model for late-Archean lode gold deposits of the Yilgarn Block, Western Australia. *Mineralium Deposita* 28: 366-374.
- Groves DI, Goldfarb RJ, Gebre-Mariam M, Hagemann SG and Robert F., 1998. Orogenic gold deposits: A proposed classification in the context of their crustal distribution and relationship to other gold deposit types. *Ore Geology Reviews* 13: 7-27.
- Groves DI, Goldfarb RJ, Robert F and Hart CJR., 2003. Gold deposits in metamorphic belts: overview of current understanding, outstanding problems, future research, and exploration significance. *Economic Geology* 98: 1-29.
- Guha J and Kanwar R., 1987. Vug brines – fluid inclusions: a key to understanding of secondary gold enrichment processes and the evolution of deep brines in the Canadian Shield. In: Fritz P and Frape SK (eds) *Saline Water and Gases in the Crystalline Rocks*. Geological Association of Canada Special Paper 33: 95-101.
- Haynes DW., 2000. Iron Oxide Copper (-Gold) Deposits: Their Position in the Ore Deposit Spectrum and Modes of Origin. In: Porter TM (ed.) *Hydrothermal Iron Oxide Copper-Gold and Related Deposits: A Global Perspective*, Australian Mineral Foundation, Adelaide, 71-90.
- Hagemann SG and Ridley JR., 1993. Hydrothermal fluids in epi- and katazonal crustal levels in the Archean: implications for P-T-X-t evolution of lode-gold mineralisation. In: Williams PR and Haldane JA (eds) *Kalgoorlie '93: An International Conference on Crustal Evolution, Metallogeny and Exploration of the Eastern Goldfields*: Australian Geological Survey Organisation, Record 1993/54: 123-130.
- Hitzman MW., 2000. Iron oxide-Cu-Au deposits: what, where, when, and why. In: Porter TM (ed.) *Hydrothermal Iron Oxide Copper-Gold and Related Deposits: A Global Perspective*. Australian Mineral Foundation, Adelaide: 9-25.
- ICS., 2004. International Commission on Stratigraphy: 2004: International Stratigraphic Chart.
- İlbeyli N, Pearce JA, Thirlwall MF and Mitchell JG., 2004. Petrogenesis of collision-related plutonics in central Anatolia, Turkey. *Lithos* 72(3-4): 163-182.
- Kadioğlu YK., Dilek Y., Güleç N. and Foland KA., 2003. Tectonomagmatic evolution of bimodal plutons in the Central Anatolian Crystalline Complex, Turkey. *Journal of Geology* 111: 671-690.
- Ketin I., 1955) On the geology of Yozgat region and the tectonic features of the Central Anatolian Massif (Kırşehir Crystallines). *Bulletin of the Geological Society of Turkey* VI (1): 1-20 (in Turkish with English abstract).
- Ketin I., 1966. Tectonic units of Anatolia (Asia Minor). *Bulletin of the Mineral Research and Exploration Institute of Turkey* 66 (foreign edition): 23-34.
- McCuaig TC. and Kerric R., 1994. P-T-t deformation-fluid characteristics of lode gold deposits: Evidence from alteration systematics. In: Lentz DR (ed.) *Alteration and Alteration Processes associated with Ore-Forming Systems*. Geological Association of Canada, Short Course Notes 11: 339-379.
- Mehnert KR., 1968. *Migmatites and the origin of granitic rocks*. Elsevier, New York, 393pp.
- Möller P, Weise SM, Althaus E, Bach W, Behr HJ, Borchardt R, Bräuer K, Drescher J, Erzinger J, Faber E, Hansen BT, Horn EE, Heunges E, Kämpf H, Kessels W, Kirsten T, Landwehr D, Lodemann M, Machon L, Pekdeğer A, Pielow H-U, Reutel C, Simon K, Walther J, Winilich FH, Zimmer M., 1997. Paleofluids and recent fluids in the upper continental crust: results from the German Continental Deep Drilling Program (KTB). *Journal of Geophysical Research* 102, B18233-18254.
- MTA., 2002. Geological maps of Turkey, 1/500,000 scale, Ankara sheet, MTA (General Directorate of Mineral Research and Exploration), Ankara.
- Mullis J, Dubessy J, Poty B, and O'Neil J., 1994. Fluid regimes during late stages of continental collision: Physical, chemical, and stable

- isotope measurements of fluid inclusions in fissure quartz from a geotraverse through the Central Alps, Switzerland. *Geochemica et Cosmochimica Acta* 58/10, 2239-2267.
- Munz IA, Yardley BWD, Banks DA and Wayne D., 1995. Deep penetration of sedimentary fluids in basement rocks from southern Norway: evidence from hydrocarbon and brine inclusions in quartz veins. *Geochemica et Cosmochimica Acta* 59(2): 239-254.
- Özcan A. and Çağatay MN., 1989. Tungsten exploration in semiarid environment: Central Anatolian Massif, Turkey. *Journal of Geochemical Exploration* 31, 185-199.
- Özer S. and Göncüoğlu MC., 1983. Interesting mineral parageneses from the eastern part (Akdağmadeni-Yıldızeli) of the Central Anatolian Massif. *Bulletin of Mineral Research and Exploration Institute of Turkey* 95/96: 173-174 (in Turkish).
- Pehlivan AN. and Alpan T., 1986. The preliminary report on gold, tin and heavy mineral explorations in Niğde Massif. MTA report, Ankara (in Turkish).
- Pettke T., Diamond LW. and Villa IM., 1999. Mesothermal gold veins and metamorphic devolatilization in the NW Alps: the temporal link. *Geology* 27: 641-644.
- Pettke T., Diamond LW. and Kramers JD., 2000. Mesothermal gold lodes in the north-western Alps: a review of genetic constraints from radiogenic isotopes. *Eur. J. Mineral.* 12: 213-230.
- Pollak A., 1958. Über einige geologische Beobachtungen im zentral-anatolischen Massiv. *Notizbl. Hess. Landesamt Bodenforschung* 87: 239-245.
- Pollard PJ., 2000. Evidence of a magmatic fluid and metal source for Fe-oxide Cu-Au mineralization. In: Porter TM (ed.) *Hydrothermal Iron Oxide Copper-Gold and Related Deposits: a Global Perspective*. Australian Mineral Foundation, Adelaide: 27-41
- Pollard PJ., 2001. Sodic (-calcic) alteration in Fe-oxide-Cu-Au districts: an origin via unmixing of magmatic  $H_2O-CO_2-NaCl \pm CaCl_2-KCl$  fluids. *Mineralium Deposita* 36: 93-100.
- Robert ., 1995) Gold-quartz veins in metamorphic terranes and their bearing on the role of fluids in faulting. *Journal of Geophysical Research* 100-B7: 12861-12879.
- Seymen I., 1981. Stratigraphy and metamorphism of the Kırşehir Massif around Kaman (Kırşehir-Turkey). *Geological Society of Turkey Bulletin* 24(2): 101-108 (in Turkish with English abstract).
- Seymen., 1982. Geology of Kırşehir Massif around Kaman. ITU Min.Fac. Istanbul, 164pp. (unpublished Thesis, in Turkish with English abstract).
- Seymen I., 1984. Geological evolution of the metamorphic rocks in the Kırşehir Massif. *Türkiye Jeoloji Kurumu, Ketin Symposium Book*, 133-148 (in Turkish with English abstract).
- Seymen I., 2000. Geology of the Kırşehir Massif between Savcılıbeyit (Kaman) and Yeşilli (Kırşehir) villages. *Cumhuriyetin 75. Yıldönümü Yerbilimleri ve Madencilik Kongresi, Bildiriler Kitabı I*, MTA-Ankara, 67-91 (in Turkish with English abstract).
- Sezerer-Kuru G. and Genç Y., 2003. Fluid inclusion studies in the gold bearing quartz veins in Savcılıbeyit (Kaman-Kırşehir) Region. 56<sup>th</sup> Geological Congress of Turkey, Extended Abstract Book, pp 92.
- Smith MP., Savary V., Yardley BWD., Valley JW., Royer JJ. and Dubois M ., 1998. The evolution of the deep flow regime at Soultz-sous-Forêts, Rhine Graben, Eastern France: evidence from a composite quartz vein. *Journal of Geophysical Research* 103, 27223-27237.
- Stober I. and Bucher K ., 1999. Deep groundwater in the crystalline basement of the Black Forest region. *Applied Geochemistry* 14, 237-254.
- Stüwe K ., 1998. Tectonic constraints on the timing relationships of metamorphism, fluid production and gold-bearing quartz vein emplacement. *Ore Geology Reviews* 13: 219-228.
- Tolluoğlu Ü., 1986. Petrographical and petroctectonic investigations in the southwestern part of the Central Anatolia Massif, Kırşehir region. Ph.D. thesis, Hacettepe University, Ankara. 237pp. (in Turkish with English abstract, unpublished).
- Tolluoğlu Ü. and Erkan Y., 1989. Regional progressive metamorphism in the central Anatolian

- crystalline basement, NW Kırşehir Massif, Turkey. METU Journal of Pure and Applied Sciences 22(3): 19-41.
- Tülümen E., 1980. The petrographic and metallogenic investigation of the Akdağmadeni region. Ph.D thesis, Karadeniz Technical University, 157pp (in Turkish with English abstract, unpublished).
- Türkmen H., Demiray B., Karabalık N., Konya S., Yüce N., Çamaşırcıoğlu A. and Bilgin R., 2000. Geological map of the Savcılıbeyit gold mineralisation (unpublished data), MTA, Ankara.
- Whitney DL. and Dilek Y., 1998. Metamorphism during Alpine crustal thickening and extension in central Anatolia, Turkey: the Niğde metamorphic core complex. Journal of Petrology 39(70): 1385-1403.
- Whitney DL., Teyssier C., Dilek Y. and Fayon AK., 2001. Metamorphism of the Central Anatolian Crystalline complex, Turkey: influence of orogen-normal collision vs. wrench-dominated tectonics on P-T-t paths. Journal of Metamorphic Geology 19: 411-432.
- Whitney DL., Teyssier C., Fayon AK., Hamilton MA. and Heizler M., 2003. Tectonic controls on metamorphism, partial melting, and intrusion: timing and duration of regional metamorphism and magmatism in the Niğde Massif, Turkey. Tectonophysics 376: 37-60.
- Yardley BWD. and Bottrell SH., 1992. Silica mobility and fluid movement during metamorphism of the Connemara schists, Ireland. Journal of Metamorphic Geology 10: 453-464.